

# Producing and Consuming Open Data

**Peter Mooney**

Department of Computer Science

National University of Ireland Maynooth (NUIM)

Maynooth, Co. Kildare. Ireland

Email: [peter.mooney@nuim.ie](mailto:peter.mooney@nuim.ie)

Web: <http://www.cs.nuim.ie/~pmooney>



NUI MAYNOOTH  
Ollscoil na hÉireann Má Nuad



Environmental Protection Agency

<http://punkish.org/opengov/program/index.html>

# Crossing paths with Open Data

- **PRODUCER**

- Environmental Protection Agency Ireland (since 2003)
- STRIVE Research Programme (2007 – 2013)
- EPA Air Quality, GHG, etc [National, International]

- **CONSUMER**

- National University of Ireland Maynooth (NUIM)
- GIS Research
- VGI + OpenStreetMap – Quality Measurement
- Location-based Services



“A piece of content or data is **open** if you are free to use, reuse, and redistribute it — subject only, at most, to the requirement to attribute and share-alike.”  
*(Open Knowledge Definition, 2011)*

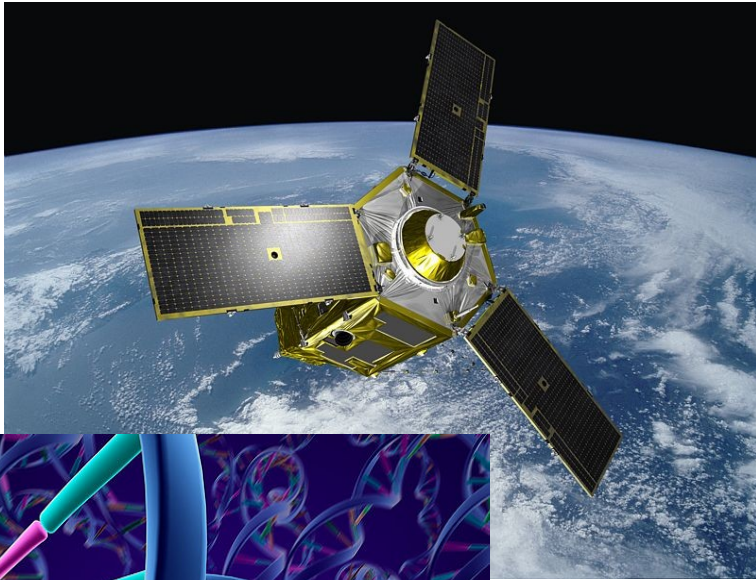
**Many producers** are:

- unable/unwilling to open their data
- not aware of the potential
- don't have resources
- don't see the use-cases/need

- Most consumers** just want to
- use for their own apps/purposes
  - use data they, as citizens, have a right to access

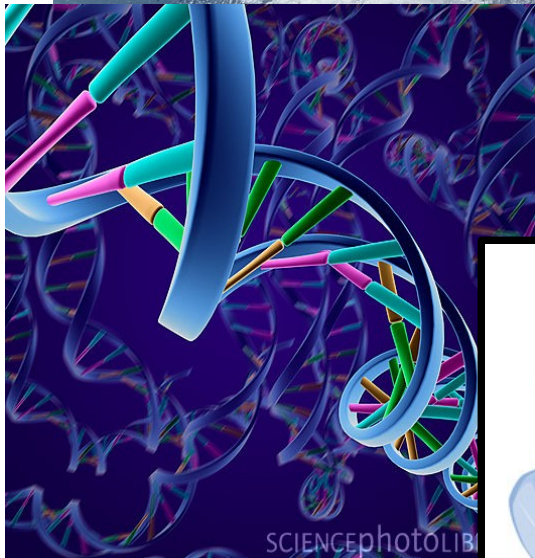
# Science as a public enterprise – the case for open data

(*The Lancet* Vol 377, May 2011 pp 1633-1635)



“habits of scientists have not changed since 18<sup>th</sup> century”

“science profoundly changes the lives of citizens”



“scientists regard data as their private property”

Much of science research is carried out with public funds!



Environmental Protection Agency



Search

- What We Do
- The Environment & You
- Research & Education
- News Centre
- EPA Downloads
- About Us

You are here: [EPA Home](#) > [Research](#) > [Environmental Research Centre](#) > [SAFER-Data](#) > Welcome Page **Not Logged On**

- ERC Homepage
- SAFER-Data**
  - » Logon
  - » Search SAFER-Data
  - » SAFER-Data Homepage
- SAFER-Data Contents**
  - » Popular Datasets
  - » Popular Reports
  - » Browse Resources
  - » Browse Datasets
- SAFER-Data Background**
  - » Site Map
  - » Register for an Account
  - » EPA Research Reports
  - » Technical Information
  - » SAFER-Data RSS Feeds
  - » Site Traffic Info
  - » About SAFER-Data
  - » Contact SAFER-Data

## Secure Archive For Environmental Research Data

SAFER-Data is a fully web-based interface to the EPA's Environmental Research Center's Environmental Research Data Archive. Information is presented on SAFER-Data as a "resource" and any related datasets or information objects that are publicly available for download. You can follow SAFER-Data on [Twitter](#) and using [RSS feeds](#)

- » **194 Resources Now Publicly Available** ([View All Resources Now!](#))
- » **1816 Files Now Publicly Available For Download** ([Download Files Now!](#))
- » **90 EPA Research Reports Now Publicly Available For Download** ([Download Reports Now!](#))

Here are the **10 most recently contributed or edited resources**. They are listed as follows:

### Composition and Sources of Particulate Air Pollution in a Port Environment, Cork, Ireland

<b>Title:</b>	<b>Composition and Sources of Particulate Air Pollution in a Port Environment, Cork, Ireland</b>
<b>Owners/Creators:</b>	Dr. Ian O'Connor <i>et. al</i>
<b>Resource Keywords:</b>	Composition Particulate Air Pollution pm10 cork ELIPSE
<b>Resource Last Updated:</b>	Wed, 15 Jun 2011 09:43:26 GMT
<b>Resource Created On SAFER-Data:</b>	Mon, 30 May 2011 11:04:59 GMT
<b>Attached Dataset Files:</b>	<a href="#">Files Are Available To Download From This Resource</a>
<b>View Full Resource Details:</b>	<a href="#">View Full Details</a>

### Ireland's National Greenhouse Gas Inventory

<b>Title:</b>	<b>Ireland's National Greenhouse Gas Inventory</b>
<b>Owners/Creators:</b>	Mr. Paul Duffy

<http://erc.epa.ie/safer>

# **SAFER provides a focal point for producers and consumers of environmental data/information**

**Mixture of “data” and information (reports, etc)**



**Conversion to “open formats” is carried out by EPA**

**Replaces the traditional “gray dusty archives” where research output usually ended up**

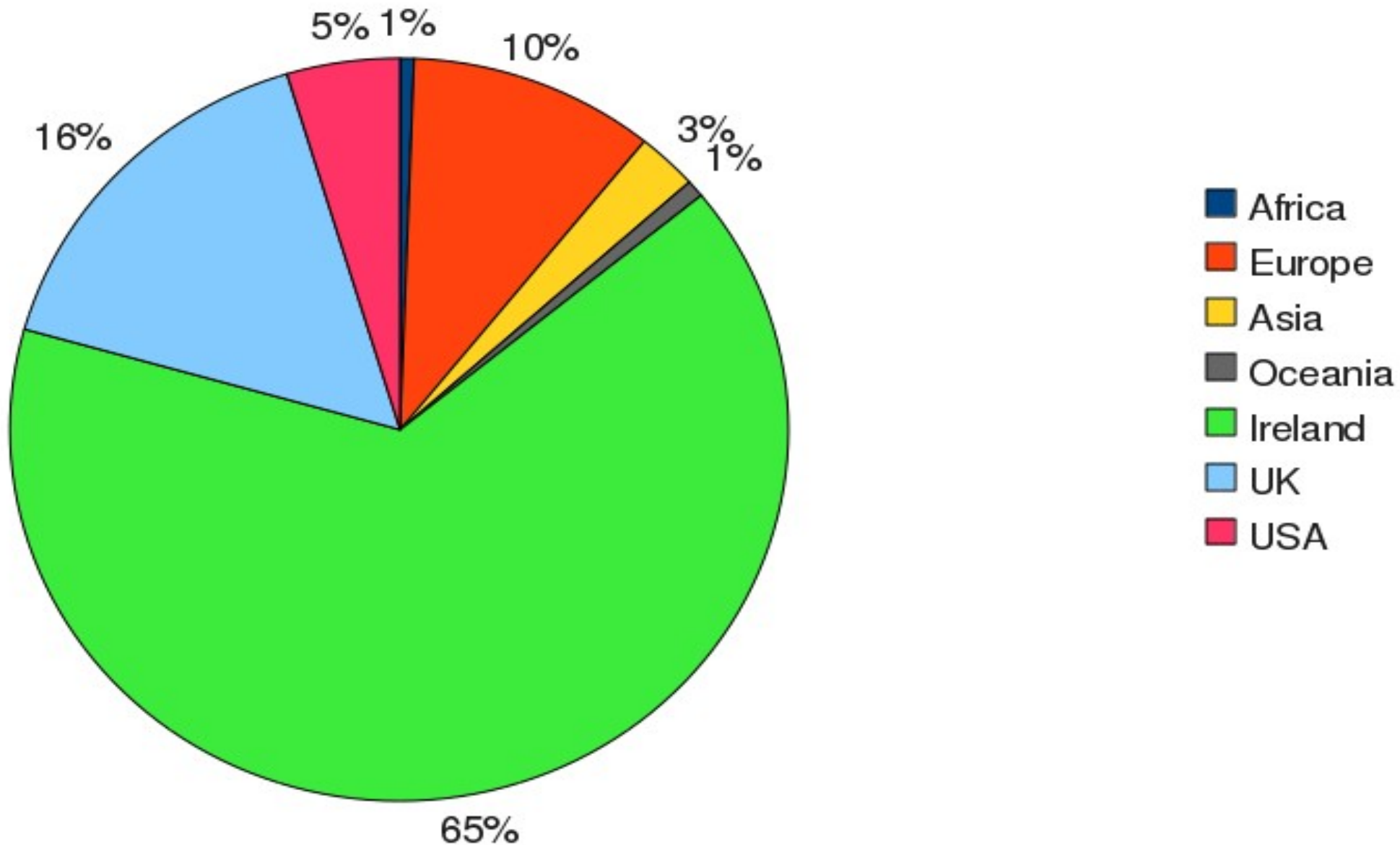
**Researcher/Academic resistance is still an issue**

# About 80% of downloads are from locations in Ireland and the UK



# Geographical breakdown is as we would have expected

Geographical Location of SAFER Downloads



# “Data mining” is a serious problem for Open Data in Science/Academia

“The data is mine....  
ALL mine..”

(From Werner Kuhn)

# Policy Drivers..



Europe's Information Society  
Thematic Portal

European Commission > Information Society

Policies Activities Culture & Society Economy & Work Education & Training Quality of Life IS Industry Regions / World Research & Innovation



Public Sector Information

- Existing rules
- Infringements
- Facilitating Re-use
- Library
- Archives
- Contacts

## Public Sector Information

### Public Sector Information - Raw Data for New Services and Products

Public sector information (PSI) is the single largest source of information in Europe. It is produced and collected by public bodies and includes digital maps, meteorological, legal, traffic, financial, economic and other data. Most of this raw data could be re-used or integrated into new **products and services**, which we use on a daily basis, such as car navigation systems, weather forecasts, financial and insurance services.

Re-use of public sector information means using it in new ways by adding value to it, combining information from different sources, making mash-ups and new applications, both for commercial and non-commercial purposes. Examples include real time traffic information and bus timetables together with maps downloaded to smart phones. Public sector information has great economic potential. According to a survey conducted by the European Commission in 2006 (**MEPSIR study**), the overall market size for PSI in the EU is estimated at **27 billion**. Increase in the re-use of PSI generates new businesses and jobs and provides consumers with more choice and more value for money.

In 2003, the EU adopted the **Directive on the re-use of public sector information** (PSI Directive). It has introduced a common legislative framework regulating how public sector bodies should make their information available for re-use in order to remove barriers such as discriminatory practices, monopoly markets and a lack of transparency. All 27 EU Member States have implemented the PSI Directive into their national legal orders. **PSI rules in the Member States.**


In 2009, the Commission **reviewed** the way in which EU PSI rules were being applied, which confirmed that PSI-re use has been on the rise but also that to realise the full potential of PSI for the EU economy, EU Member States must remove remaining barriers to re-use.

**Data** Glossary Metadata More




Search

33 databases - 60 million records  Update calendar

Databases	Updates	Country data services
<ul style="list-style-type: none"> <li>Crime                             <ul style="list-style-type: none"> <li>International Homicide Data, UNODC</li> </ul> </li> <li>Education                             <ul style="list-style-type: none"> <li>UIS Data Centre, UNESCO UIS </li> </ul> </li> <li>Energy</li> </ul>	<ul style="list-style-type: none"> <li> For updated World Telecommunication/ICT Indicators from ITU, visit: <a href="http://data.un.org/Explorer.aspx?d=ITU">http://data.un.org/Explorer.aspx?d=ITU</a> 26 days ago</li> <li> Visit UNdata for UNESCO's latest</li> </ul>	<ul style="list-style-type: none"> <li> Afghanistan</li> <li> Albania</li> <li> Algeria</li> <li> Andorra</li> </ul>

 **MBS** Monthly Bulletin of Statistics and other UNSD data resources

▶ Popular searches

▶ Feedback and reviews   



**Openly Local** is a new project to develop an open and unified way of accessing Local Government information.

So far we have opened up data for over 140 local authorities, and more are being added every week, with more information being opened up too.

### We currently have information on:

- 163 councils
- 11,238 councillors
- 6,521 committees
- 69,256 committee meetings
- 480 hyperlocal sites
- 38,677 documents
- Over 270,956 pieces of data
- 2,146,603 financial transactions

Most of the data is accessible as [XML](#) or [json](#) data through a simple API (basically add .xml or .json to the main part of the URL). There is also a [Google Gadget](#), an app for Hyperlocal sites using Ning, and a [simple javascript widget](#)

### Openly Local news

FEBRUARY 23 2011, 11.15AM

#### **A first look at the council spending data: Â£10bn, 1.5m payments, 60,000 companies**

Like buses, you wait ages for local councils to publish their spending data, then a whole load come at once... and consequently OpenlyLocal has...

FEBRUARY 22 2011, 11.32PM

#### **Videoring council meetings redux: progress on two fronts**

Tonight, hyperlocal bloggers (and in fact any ordinary members of the public) got two great boosts in their access to council meetings, and their a...

DECEMBER 8 2010, 4.33PM

#### **Videoring council meetings revisited: the limits of openness in a transparent council**

A couple of months ago, I blogged about the ridiculous situation of a local councillor being hauled up in front of the council's standards co...

### Most recently updated councils

- **UPDATED** London Borough of Southwark
- **UPDATED** London Borough of Newham
- **UPDATED** London Borough of Lambeth
- **UPDATED** London Borough of Islington
- **UPDATED** London Borough of Hounslow

### Latest councillors

- **London Borough of Harrow** **UPDATED** Amir Moshenson
- **Huntingdonshire District Council** Paula Jayne Longford
- **Gloucestershire County Council** Karon Cross

### Forthcoming meetings

- **Belfast City Council** Town Planning Committee meeting, Jun 16 2011, 4.30PM
- **Canterbury City Council** Executive meeting, Jun 16 2011, 5.00PM
- **Gravesham Borough Council** Independent

Search



Data

Apps

Ideas

Forum

Wiki

Blogs

Linked Data

Resources

About



## Data

Search

Looking for something specific, or just want to know more about how Government spends your money? You'll find over 6900 datasets to help you get answers.

### Browse by publisher | [View all publishers](#)

- > [Cabinet Office \(43\)](#)
- > [Department for Business, Innovation and Skills \(163\)](#)
- > [Department for Communities and Local Government \(781\)](#)
- > [Department for Environment, Food and Rural Affairs \(421\)](#)
- > [Department for Transport \(151\)](#)
- > [Department of Health \(1001\)](#)
- > [UK Statistics Authority \(716\)](#)

### Browse by nation



[View all nations](#)

[England](#)

[Northern Ireland](#)

[Scotland](#)

[Wales](#)

### EDITOR'S PICK

[COINS – HM Treasury's database of public spending](#)

### Popular tags

[View all tags](#)

[health \(1,171\)](#)

[transparency \(837\)](#)

[care \(823\)](#)

[communities \(661\)](#)

[child \(609\)](#)

[health-and-social-care \(608\)](#)

[children \(571\)](#)

[local-government \(566\)](#)

### Developers

You can also access this catalogue via the [API](#) or download it as a [CSV/JSON dump](#).



# Data

This page in English Español Français العربية 中文

- Activities
- 1. Institutional Issues
  - 2. Internal and Management Issues
    - 2.1. Structure of the Organization



## How are data and statistics produced?

New web-based tool makes information about national statistical systems easier to find and share.

### THE WORLD BANK Open Data

The *Data Catalog* provides download access to over 7,000 *indicators* from World Bank data sets.

#### BROWSE DATA

**By Country**  
View profiles for over 200 countries and economies

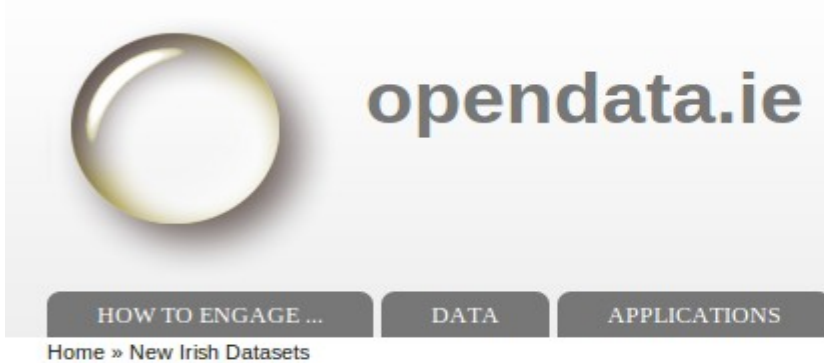
#### Find an indicator

GNI per capita, Atlas method (current US\$)

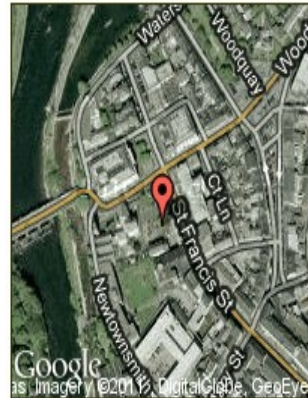
[Learn more about data sets](#)

**By Topic**  
See key indicators for a variety of topics

# Initiatives in Ireland are consumer driven



Scoil an Linbh Iosa, St. Francis Street, Galway (#11/141)



**Who is applying:** The Board of Management of Scoil an Linbh Iosa  
**Date of application:** 2011-05-31  
**File number:** 11/141

Permission for development to construct an infill porch to the main name/logo signage on the front, rear and side elevations

[http://lab.linkeddata.deri.ie/2010/planning-apps/#\\_11/141](http://lab.linkeddata.deri.ie/2010/planning-apps/#_11/141)

[2006](#) [ability](#) [addresses](#) [african](#) [age](#) [black](#) [blacks](#) [bus](#) [buss](#) [cen](#) [education](#) [eireann](#) [expenses](#) [galway](#) [map](#) [ma](#) [applications](#) [political-parties](#) [population](#) [province](#) [provinces](#) [regi](#) [sewerage](#) [single](#) [social](#) [speak](#) [supply](#) [tank](#) [tds](#) [thetory](#) [toi](#) [xls](#)

## New Irish Datasets

- World Bank data Ireland
- List of all schools in Ireland
- Oireachtas Bills 1997 – 2010
- Latest Galway City planning applications
- Fingal AB Social Class Household
- Galway Public Toilets Data (GPTD)
- gobus dublin-galway schedule
- Ethnic or Cultural Background
- Enterprise Ireland raw data
- Donation to TDs, 1997 – 2008
- Donations to senators 2002 – 2008
- Donations to political parties 1997 – 2008

**Jérémie Laval / DublinBusSchedule**  
 python · public scraper

[Scraper](#) | [Edit \(python\)](#) | [History](#) | [Discussion \(0\)](#)

[Fork this scraper](#)  
 [Download SQLite3 database](#)  
 [Explore with ScraperWiki API](#)

[Download spreadsheet \(CSV\)](#)

swdata (180 rows)			
busNumber	mondayFriday	from	date_scrp
26	07:07,07:37,08:07,08:37,09:07,09:37,10:07,10:37,11:07,11:37,12:07,12:37,13:07,13:37,14:07	Merrion Sq.	
25b	05:46,06:16,06:46,07:01,07:11,07:21,07:31,07:41,07:51,08:01,08:11,08:21,08:31,08:41,08:51	Adamstown Rail Station	
...	...	...	...



Environmental Protection Agency



- Home
- Latest Quality
- Annual Quality
- Learn More

Select Location

Local Authority  
Dublin City

Bathing Water  
Dollymount Strand

River Basin  
Not specified

Go >

To view results for a bathing water, select a local authority or river basin district to list their bathing waters and then choose your bathing water or use the map to zoom to your preferred bathing water.

Bathing Safety

Check out [Lifeguard availability](#)  
Find out more about [Bathing Safety & Lifeguard Info](#)

Blue Flag Status

Latest Status Dollymount Strand

**Bathing Water Quality**

Dollymount Strand

Blue Flag: No

Water Quality: Good

Dollymount Strand

Legend: [Bathing Water](#) | [River Water](#) | [Lake Water](#) | [Estuarine & Coastal Water](#)

- Good Quality
- Sufficient Quality
- Poor Quality
- Not Available/Incomplete

The latest water quality of a bathing water is assessed on the most recent sample analysis results. Overall water quality for a bathing water is assessed on all sample analysis results taken for the bathing season (1 June - 15 September) and pre-season sampling period (22 - 31 May).

Please contact the relevant local authority if you have any queries on the information shown below.

Latest Bathing Water Results 14/6/2011

Parameters	Result	Status	EU Guide Limits
Escherichia coli (cfu/100ml)	<10	Good	100
Intestinal enterococci (cfu/100ml)	20	Good	100

During the Transition Period (2011-2013) for Intestinal enterococci, bathing waters get compliant with mandatory value automatically as no compliance mandatory limit is specified in 1992 Regulations.

Bathing Season Results

Date	Overall Status	Escherichia coli	Intestinal
14/06/11	Good	Good	Good
07/06/11	Good	Good	Good
01/06/11	Good	Good	Good
25/05/11	Good	Good	Good

- Datasets**
- About

Browse all datasets available from this site

**Categories**

- All
- Arts, Culture & Heritage
- Citizen Participation
- Demographics
- Economy
- Education
- Environment
- Housing
- Public Health
- Recreation
- Technology
- Transportation & Infrastructure
- Zoning & Land Use

**Tags**

accessibility (2), Beaches (2), bins (1), Blanchardstown (1), bring banks (1), burial grounds (1), cars (1), cemeteries (1), census (1), childcare (2), children (6), Commercial Property (1), community groups

You Are Here: [DataSets](#)

**All Datasets**

Order:

<< Prev Page: 1 of 3 [Next](#) >>

Title	Agency	CSV	XML	KML	APP
<b><u>Bathing Water Quality</u></b> Details of Bathing Water Quality monitoring at Fingal's beaches.	FCC				
<b><u>Beaches</u></b> Beaches with location	FCC				
<b><u>Blanchardstown Area Partnership Enterprise Clients</u></b> Number of Enterprise Clients of Blanchardstown Area Partnership by Electoral Division	BAP				
<b><u>Bring Banks</u></b> Bring banks for recycling of glass/cans and textiles with location	FCC				
<b><u>Burial Grounds</u></b> Burial Grounds with location	FCC				
<b><u>Children in Childcare</u></b> Number of childcare places in all creches per Electoral Division from Fingal County Childcare Commi ...	FCCC				



**Table: Fuel Consumption (ktoe) by Sector, Fuel Type and Year**

**Information:** [Information details](#), [Footnotes](#)

Mark your selections and choose between table on screen and file format. Marking tips

Sector <input checked="" type="checkbox"/> <input type="checkbox"/>	Fuel Type <input checked="" type="checkbox"/> <input type="checkbox"/>	Year <input checked="" type="checkbox"/> <input type="checkbox"/>
Total:31. Selected: <input type="text" value="0"/>	Total:37. Selected: <input type="text" value="0"/>	Total:20. Selected: <input type="text" value="0"/>
<div style="border: 1px solid gray; padding: 5px;"> <ul style="list-style-type: none"> <li>Table on screen, layout 1</li> <li>Table on screen, layout 2</li> <li>PC-Axis file (.px)</li> <li>Excel file (.xls)</li> <li>Text file (.txt)</li> <li>Tab delimited file with heading (.csv)</li> <li>Tab delimited without heading (.csv)</li> <li>Comma delimited with heading (.csv)</li> <li>Comma delimited without heading (.csv)</li> <li>Space delimited with heading (.csv)</li> <li>Space delimited without heading (.csv)</li> <li>Semi colon delimited with heading (.csv)</li> <li>Semi colon delimited without heading (.csv)</li> <li>Html file (.htm)</li> <li>dBase, relational (.dbf)</li> <li>dBase, for maps (.dbf)</li> <li>Lotus (.wk1)</li> </ul> </div>	<div style="border: 1px solid gray; padding: 5px;"> <ul style="list-style-type: none"> <li>all coal products</li> <li>household coal</li> <li>solid and manufactured wood</li> <li>all peat products</li> <li>peat</li> </ul> </div>	<div style="border: 1px solid gray; padding: 5px;"> <ul style="list-style-type: none"> <li>2003</li> <li>2004</li> <li>2005</li> <li>2006</li> <li>2007</li> <li>2008</li> <li>2009</li> </ul> </div>
<input type="text" value=""/> <input type="button" value="&gt;"/>	<input type="checkbox"/> Text start	Search <input type="text" value=""/> <input type="button" value="&gt;"/>
<input type="checkbox"/> Download total.		
Selected data columns <input type="text" value="0"/>		

# The drivers of “Open Data” are appearing at a crucial time on the knowledge society landscape

**Citizen buy-in, Citizen Expectation  
Web/Internet ubiquity  
“SO WHAT?” Applications...**

**Volunteered Geographic Information  
User Generated Content  
Social Networking...**

**Economic Downturn  
--- Efficiencies required in Government  
delivery of services  
--- “Doing more with less”**



# Is it possible to quantify the influence of VGI in Open Data?

VGI is not necessarily “competing” with National Mapping Agencies (NMA) now – For ex – OS OpenData

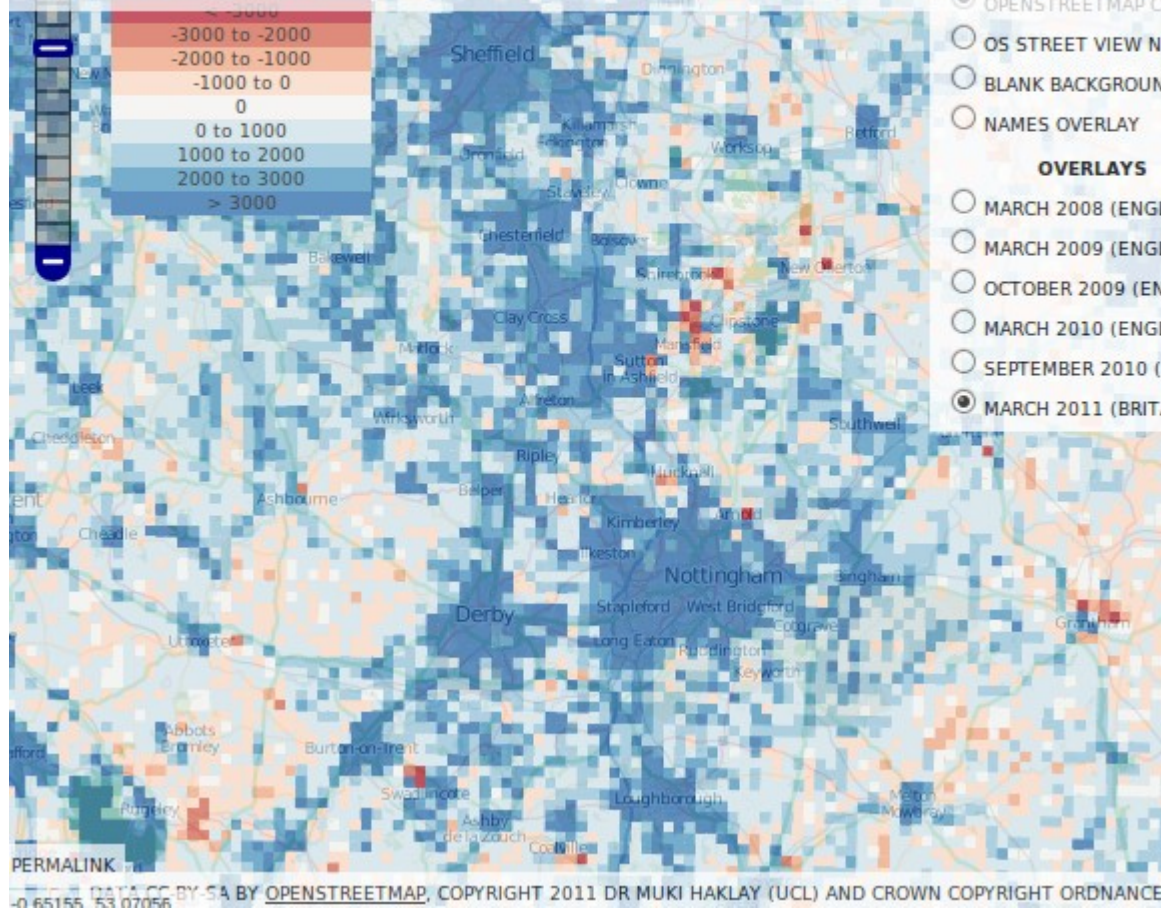
VGI as a (no)|(low) cost update intelligence for NMA?

Unfair scaremongering about VGI quality?  
(True or False)

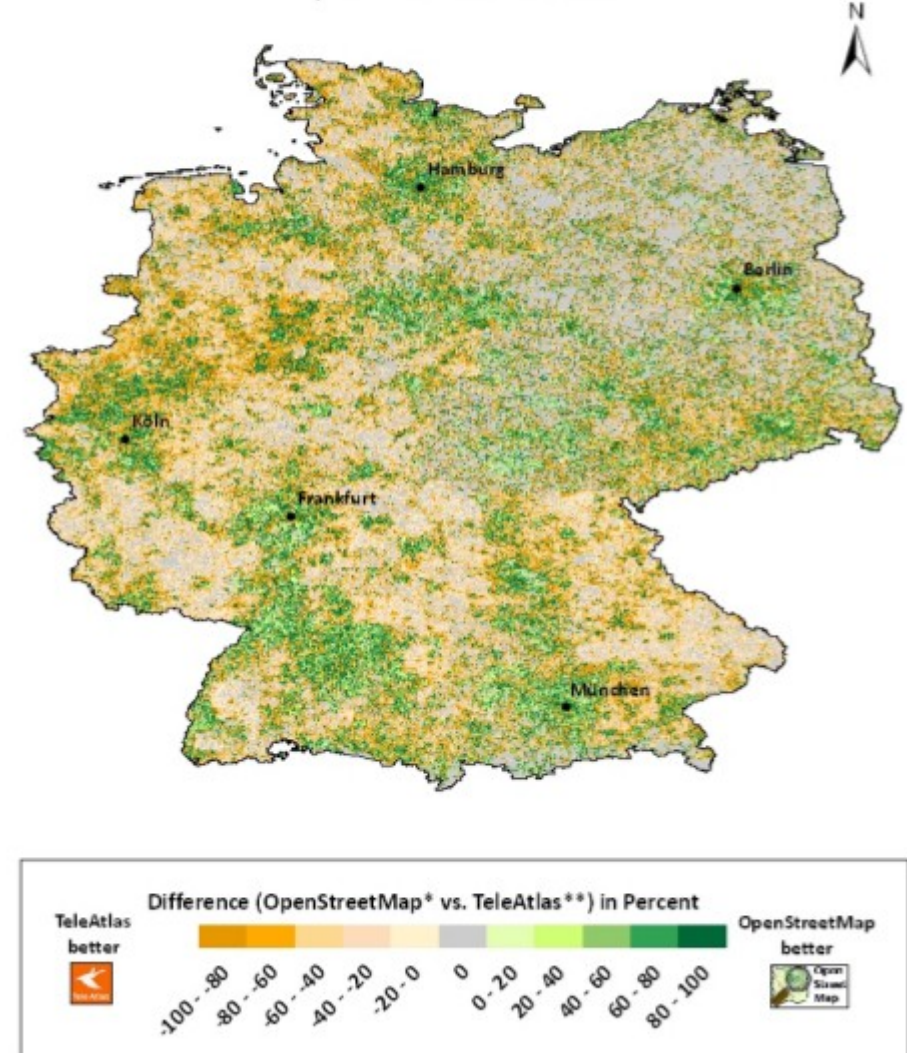
# A Historical Comparison of OpenStreetMap's Completeness in Britain

comparing road lengths with respect to Ordnance Survey's Meridian 2 Data (why?)

Data Analysis: [Dr Muki Haklay, UCL CEGE](#). Website: [Oliver O'Brien, UCL CAS](#)



Total Length Differences of Pedestrian Navigation Related Data between OpenStreetMap and Tele Atlas per km<sup>2</sup> in Percent



<http://orca.casa.ucl.ac.uk/~ollie/osmcompare/>

Zielstra, D. and Zipf, A. (2010):  
 A Comparative Study of Proprietary Geodata and Volunteered Geographic Information for Germany.  
 AGILE 2010. The 13th AGILE Guimarães, Portugal.



# Some other name change examples

## **Austria (4771112, 3 contributors)**

5 changes

"Raststätte Kapellerfeld"

"Autobahnraststätte Kapellerfeld (in Bau)"

"Autobahnraststätte Deutsch-Wagram (in Bau)"

"Raststation Deutsch-Wagram (in Bau)"

"Raststation Deutsch-Wagram"

## **England (24276789, 2 contributors)**

7 Changes

"Oakthorp Drive"

"Over Green Drive"

"Oak Thorp Cr"

"Oak Thorp Dr"

"Oak Thorp Dr; Broomcroft Rd"

"Oak Thorp Drive"

"Oak Thorpe Drive"

## **Scotland (4755815, 12 contributors)**

5 changes . .

"A199"

"Edinburgh Road"

"Milton Road East"

## **Scotland (23602699, 2 contributors)**

5 changes . .

"phenox cres"

"Phenoix cres"

"Phenoix crescent"

"Phenoix Crescent"

"Phoennoix Crescent"

"Phoenix Crescent"

# Ongoing Tag Dispute

Version	Edit Date	#Users	UserID	KEY: highway	#Tags	#Nodes					
1 (First)	10-04-2008 (08:05)	1	8732	No highway tag specified	1	12					
3	10-04-2008 (08:07)	1	8732	construction	3	29					
13	21-08-2009 (09:59)	8	7010	trunk	3	29					
14	01-09-2009 (12:59)	9	35560	construction	4	29					
15	06-09-2009 (12:51)	9	7010	trunk	4	29					
16	09-09-2009 (18:49)	10	19889	construction	5	29					
18	13-10-2009 (23:00)	10	7010	trunk	4	29					
19	14-10-2009 (21:53)	10	19889	construction	34	12-11-2009 (18:34)	11	19889	construction	5	29
21	17-10-2009 (16:20)	10	7010	trunk	35	13-11-2009 (02:13)	11	7010	trunk	5	29
22	17-10-2009 (23:03)	10	24748	construction	37	13-11-2009 (14:17)	11	19889	construction	5	29
23	04-11-2009 (01:05)	10	7010	trunk	38	14-11-2009 (00:13)	11	7010	trunk	4	29
24	05-11-2009 (08:44)	10	20510	construction	39	14-11-2009 (17:13)	11	19889	construction	5	29
25	07-11-2009 (01:49)	10	7010	trunk	40	14-11-2009 (20:38)	11	7010	trunk	5	29
26	08-11-2009 (11:53)	11	149097	construction	43	23-11-2009 (11:29)	11	87090	construction	4	3
27	08-11-2009 (11:58)	11	7010	trunk	44	23-11-2009 (11:43)	11	7010	trunk	4	3
28	08-11-2009 (20:24)	11	149097	construction	45	23-11-2009 (11:52)	11	87090	construction	4	3
29	08-11-2009 (22:47)	11	7010	trunk	46	23-11-2009 (11:56)	11	7010	trunk_link	4	3
30	09-11-2009 (11:54)	11	20510	construction	47	23-11-2009 (12:02)	11	87090	construction	4	3
31	09-11-2009 (20:26)	11	7010	trunk	48	23-11-2009 (12:06)	11	7010	trunk	4	3
32	10-11-2009 (21:35)	11	19889	construction	49	23-11-2009 (12:08)	11	87090	construction	4	3
33	11-11-2009 (00:22)	11	7010	trunk	50	25-11-2009 (14:45)	11	7010	trunk	4	3
					51	25-11-2009 (14:57)	11	87090	construction	4	3
					52	27-11-2009 (01:33)	11	7010	trunk_link	4	3
					53	02-12-2009 (13:54)	12	204176	construction	3	3
					54	07-12-2009 (23:52)	12	7010	trunk_link	3	3
					55	08-12-2009 (01:54)	12	204176	construction	3	3
					56	20-12-2009 (20:38)	13	210596	trunk	3	3
					57	20-12-2009 (22:46)	14	206986	construction	3	3
					58	24-07-2010 (09:08)	14	20510	trunk	2	3
60 (Final)	16-02-2011 (19:24)	16	145231	trunk			16	145231	trunk	2	3

Watch for user **7010**

Who is right/wrong?  
Interpretation problems....

# VGI/OSM operates in the classic crowdsourcing model

- Four fundamental challenges
  - How to recruit and retain the crowd?
  - What contributions does the crowd make?
  - How are these contributions combined to solve a specific problem?
  - How can we evaluate the crowd and their contributions?

# **Summary and Closing Remarks**

# The Open Data “Revolution” needs large AND small organizations involved

**Local Authorities,  
Universities/Colleges  
Research Institutions**

**OpenData.gov.uk**

**Ordnance Survey UK**

**World Bank**

**UN Data etc etc . . . .**

**Various National Census  
Bureaus**

**GOVERNMENT AGENCIES**

# Open Data is not “free” or “no-cost”

- The organisation making the data available – have to be responsible for raising awareness about it.
- Build relationships with communities or stakeholders who are likely to actually use the data
- This can go from: policy makers, consultants, scientists, academic, NGO, journalists/media, hackers, open communities,.....
- “Put people before stuff ...” (Alfrink, 2011)

# So what should be avoided?

- “*Blinded by visualisations*” .. “*trivialisation for the masses effect*” (Alonso, 2011)
- Monitoring usage is still an inexact science – monitoring downloads or re-use?
- Start with low hanging fruit...
- REMEMBER .... “A piece of content or data is open if you are free to use, reuse, and redistribute it — subject only, at most, to the requirement to attribute and share-alike.”

# Bridge builders required.....

A large bridge is under construction over a body of water. The bridge consists of several large, curved concrete spans supported by tall, dark steel towers. A red crane is visible in the background, and a white crane is in the foreground. The sky is a clear blue. The image is overlaid with several yellow text boxes containing various terms related to bridge building and digital technology.

**Directives and  
Legislation**

**VGI and UGC projects  
(OSM, etc)**

**Governments  
Institutions**

**Internet issues  
(Linked Data, etc)**

**Academia and  
Science**

**User Communities  
(non academia/science)**

# Steep ascent to Linked-Data?

```
<http://data.ordnancesurvey.co.uk/id/50kGazetteer/177277>  
<http://data.ordnancesurvey.co.uk/ontology/50kGazetteer/mapReference>  
<http://data.ordnancesurvey.co.uk/id/OSLandrangerMap/129> .  
  
<http://data.ordnancesurvey.co.uk/id/50kGazetteer/177277>  
<http://xmlns.com/foaf/0.1/name>  
"Nottingham Airport"  
  
<http://data.ordnancesurvey.co.uk/id/50kGazetteer/177277>  
<http://data.ordnancesurvey.co.uk/ontology/spatialrelations/northing>  
"336500"
```

- The ultimate direction for Open Data
- Currently – somewhat mysterious, steep learning curves involved, \*known to a few\*...
- Resources required (IT Skills, Time, Effort, .....
- Still examples of poorly structured CSV, XML being created...

<http://www.flickr.com/photos/peterm7/2734937205/>



# Encouraging and motivating Open Data is difficult

**Need to apply pressure to data owners to open up their data**

**No direct financial/reward incentives available (esp Academia)  
Some other type of rating?**

**Protracted Negotiations to free up data – surely not a sustainable means of opening up data resources/datasets**

# Berners-Lee offers this five-star scale for evaluating Open Data from governments



“One HUGE star for making ANYTHING available (with open license)”



“... in a machine readable format – not scans of documents for example”



.. in a machine readable Open Data in an Open Format .. even CSV”



“..... published in LINKED DATA format”



“..... in LINKED DATA format ... linked to the definitions ”

<http://opendataexpert.com/2011/open-data-self-test/>

<http://www.youtube.com/watch?v=ga1aSJXCFe0>

# However, things are changing....

IRISHTIMES.com

Thursday, June 16, 2011

News | Sport | **Business** | Comment | Life | Society | Culture

Sectors | Economy | Opinion & Analysis | Markets | Exchange Rates

Business » Technology » **Business Tech** »

Email to a friend | Email to Author | Print | RSS

The Irish Times - Friday, February 18, 2011

## Computer services board drops Microsoft

IAN CAMPBELL

THE LOCAL Government Computer Service Board, a flagship Microsoft client, is moving to open-source software after nearly 10 years of allegiance.

The public sector body provides shared ICT services to local government and was a pioneering exponent of SharePoint, the Microsoft web-based product that is used as an intranet by many of the country's 33 councils.

In 2001, the board signed a landmark €10 million contract with Microsoft, licensing end-to-end software from desktop to database for use across local government. It was renewed in 2005, but only after assistant director Tim Willoughby looked at the open-source alternatives.

At the time he expressed a reluctance to entrust local government IT platforms to a "sandal-wearing" community, preferring the level of support offered by Microsoft.

## UK government commits to open data

By Craig Grannell on May 16, 2011

Chancellor of the Exchequer George Osborne says datasets to be open to UK public



The new government site will "put the user in charge"

within those public services."

At Google Zeitgeist 2011, UK Chancellor of the Exchequer George Osborne unveiled ambitious plans regarding the opening up of government data, ostensibly in the name of accountability, but also in part perhaps as a cost-cutting and modernisation exercise.

Osborne said: "Over the next 12 months, we're going to unlock some of the most valuable datasets still locked away in government servers. This is the raw data that will enable you for the first time to analyse the performance of public services, and of competing providers

Firms urged to allow workers to use own devices and apps  
<http://www.netmagazine.com/news/uk-government-commits-open-data>  
Magnum resists Eircom price spin

# There are genuine concerns about Open Data and “the digital divide”

Navigation of complex download forms/interfaces

- Download formats/software required, Assumes good internet access



- Is too much of the “open data” discourse underpinned by assumption of *young, digital, IT Skilled*, access?

# My Open Data “To Do” list

1. Understand the consumers,  
the use cases, future uses

2. Linked Data - more examples needed  
- still a little inaccessible

3. Quantify the influence or role of  
Volunteered Geographic Information

4. Stay PRO-ACTIVE . . highlight success,  
address problems, and communicate!

# Questions and Comments. Thanks for Listening!

1. Understand the consumers,  
the use cases, future uses

2. Linked Data - more examples needed  
- still a little inaccessible

3. Quantify the influence or role of  
Volunteered Geographic Information

4. Stay PRO-ACTIVE . . highlight success,  
address problems, and communicate!