



QGIS Data Visualisation

Heikki Vesanto

@HeikkiVesanto

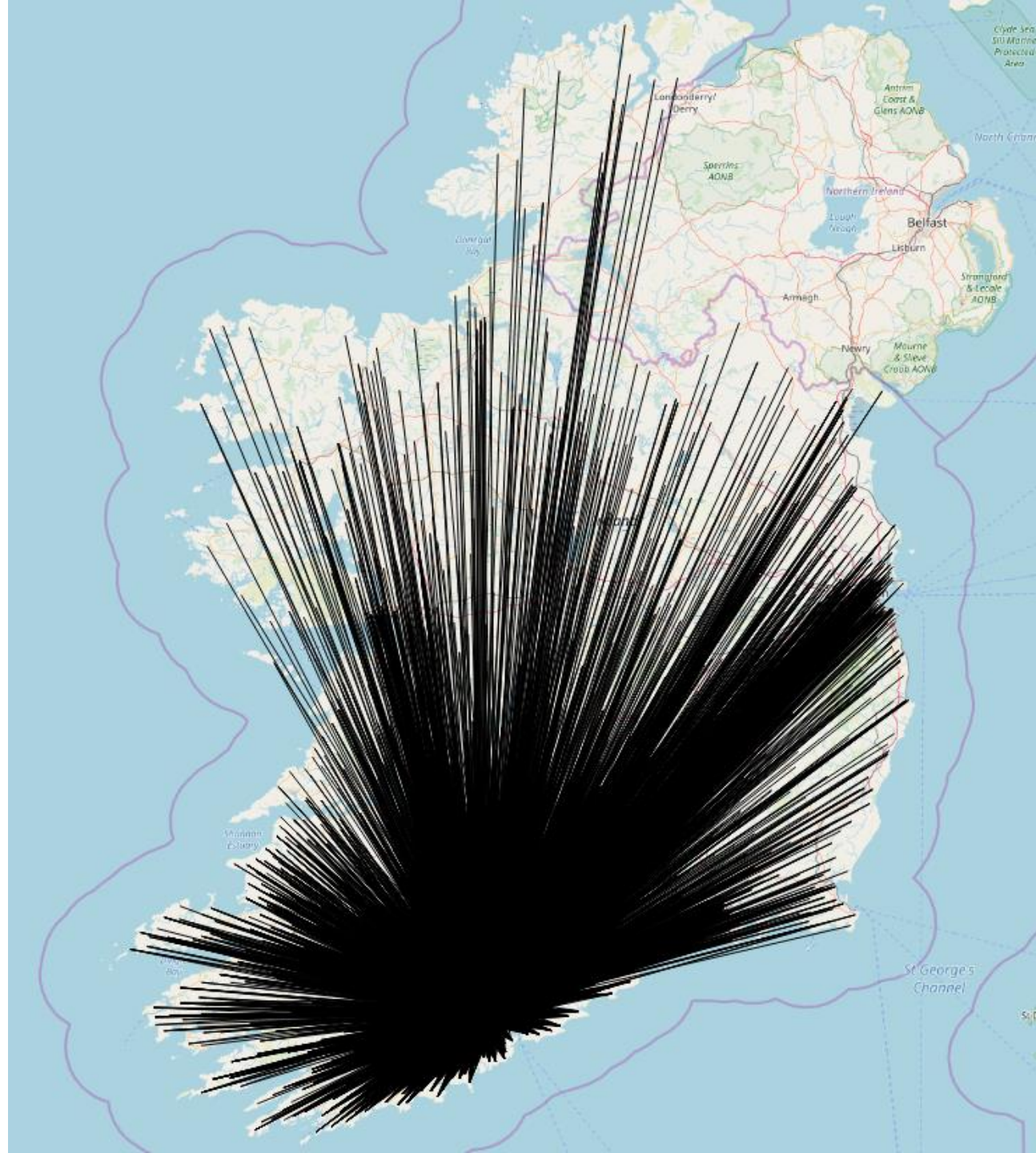
Blending Modes

Default

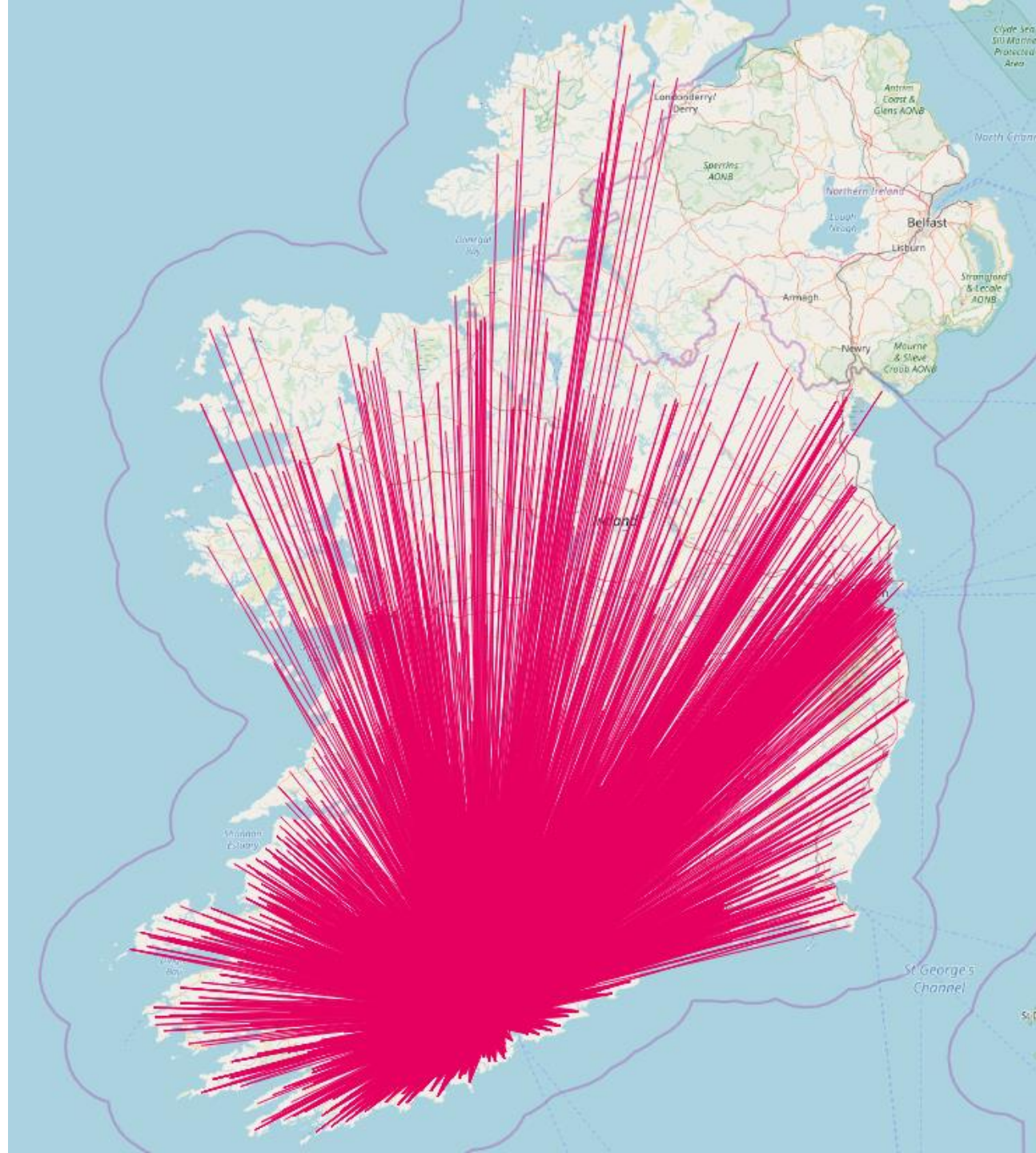
Place of Work, School or
College - Census of
Anonymised Records
(POWSCAR)

CSO

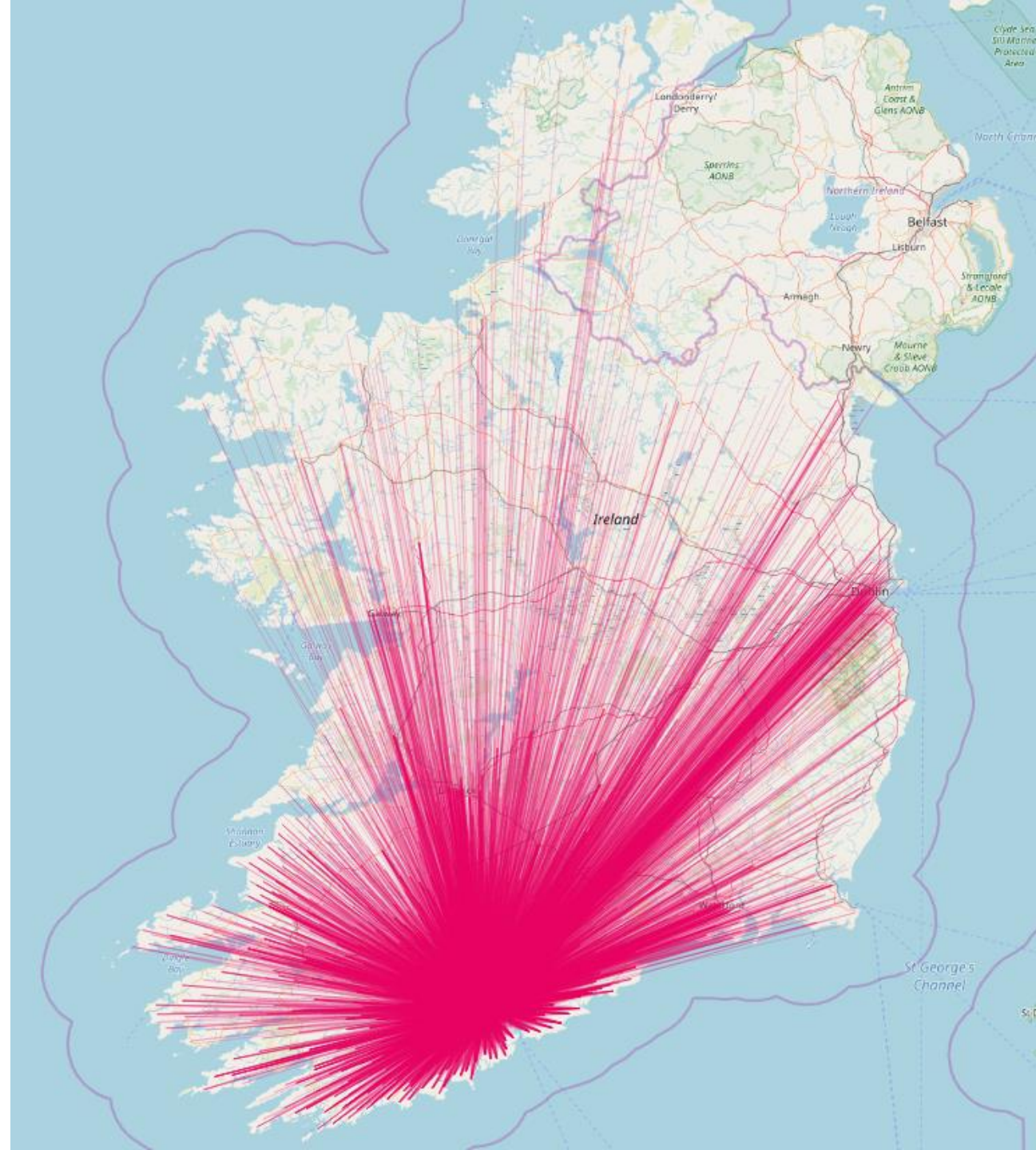
From electoral division to
electoral division



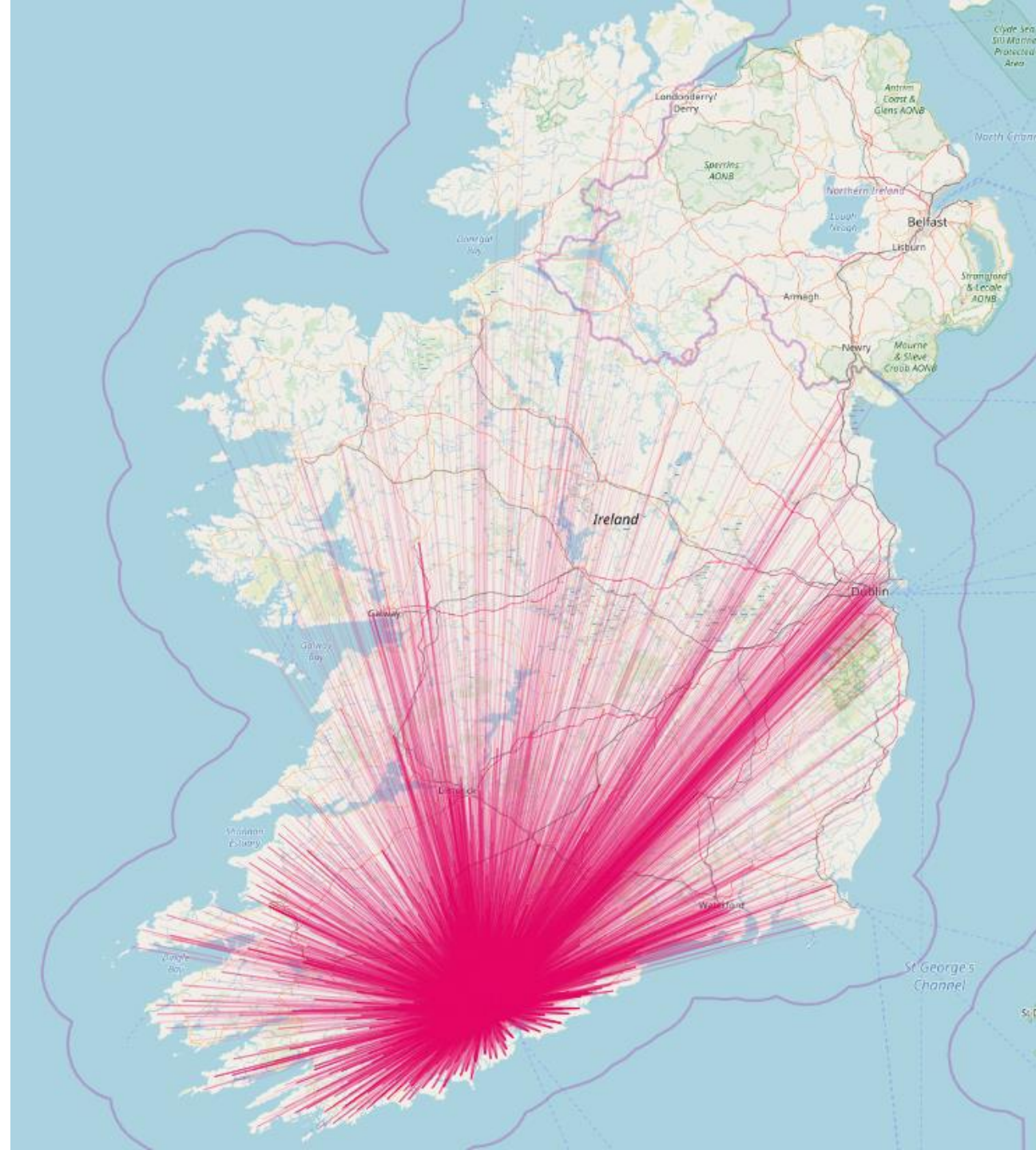
Colour #e60060

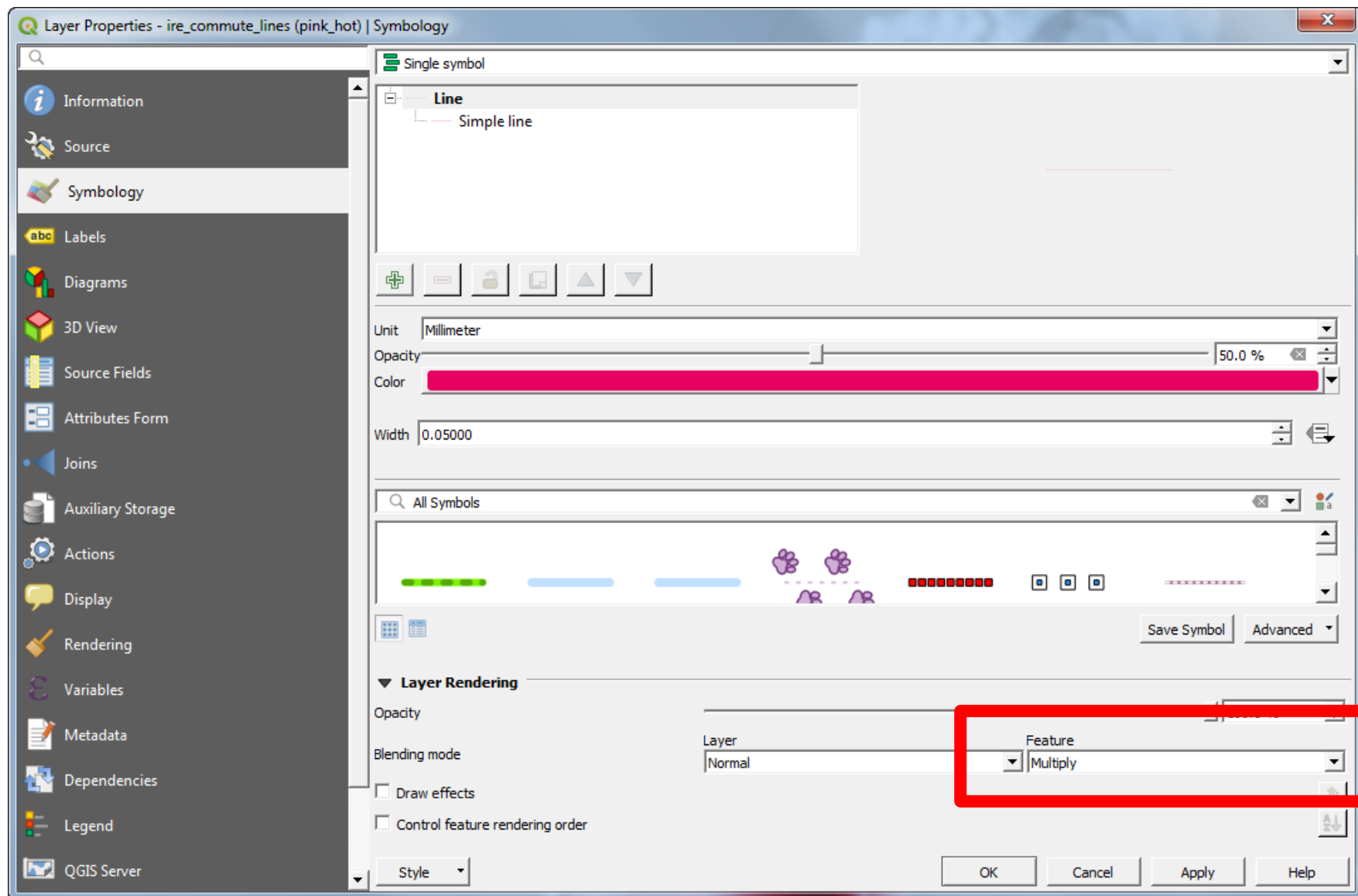


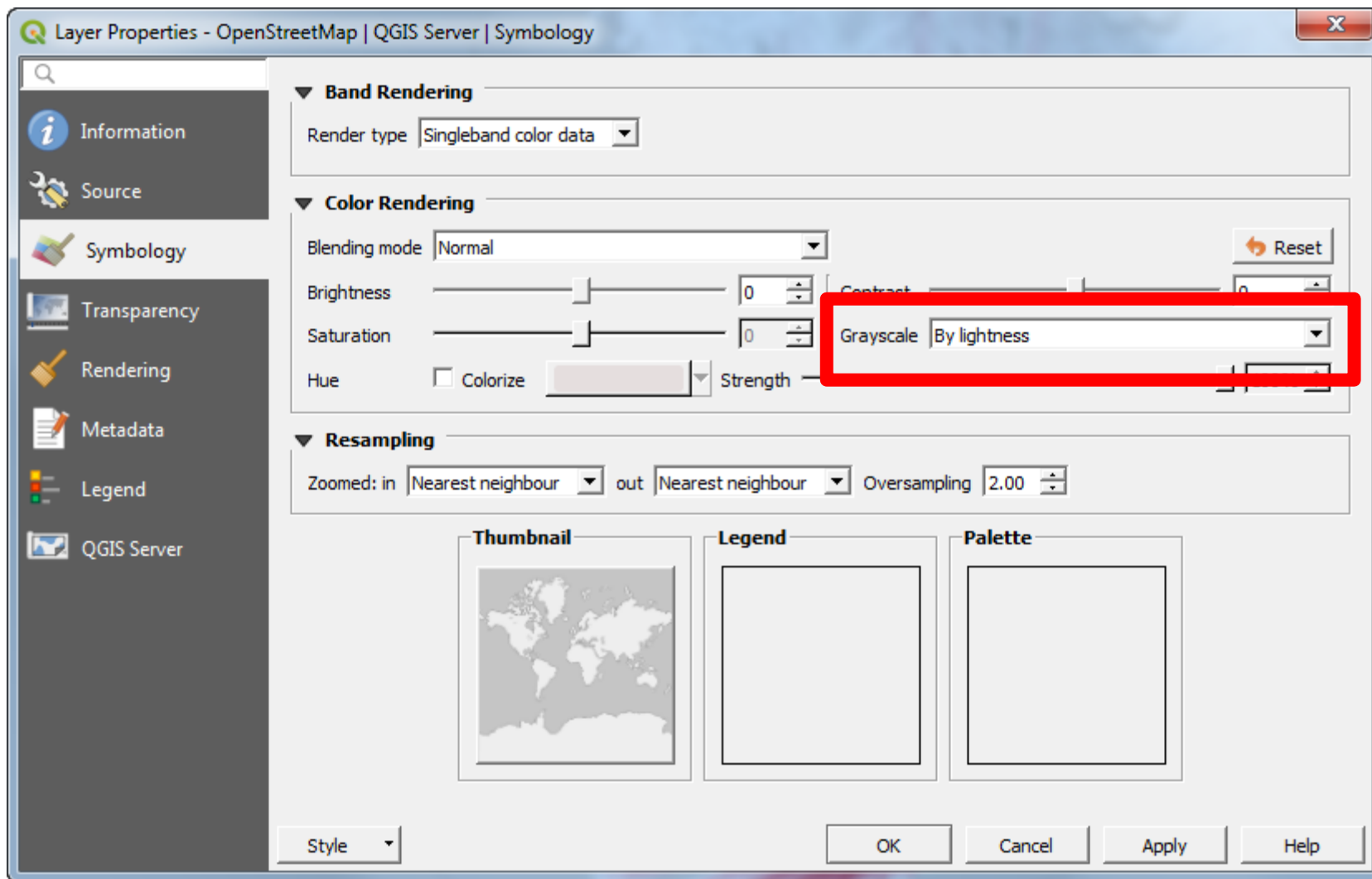
0.05 Thickness



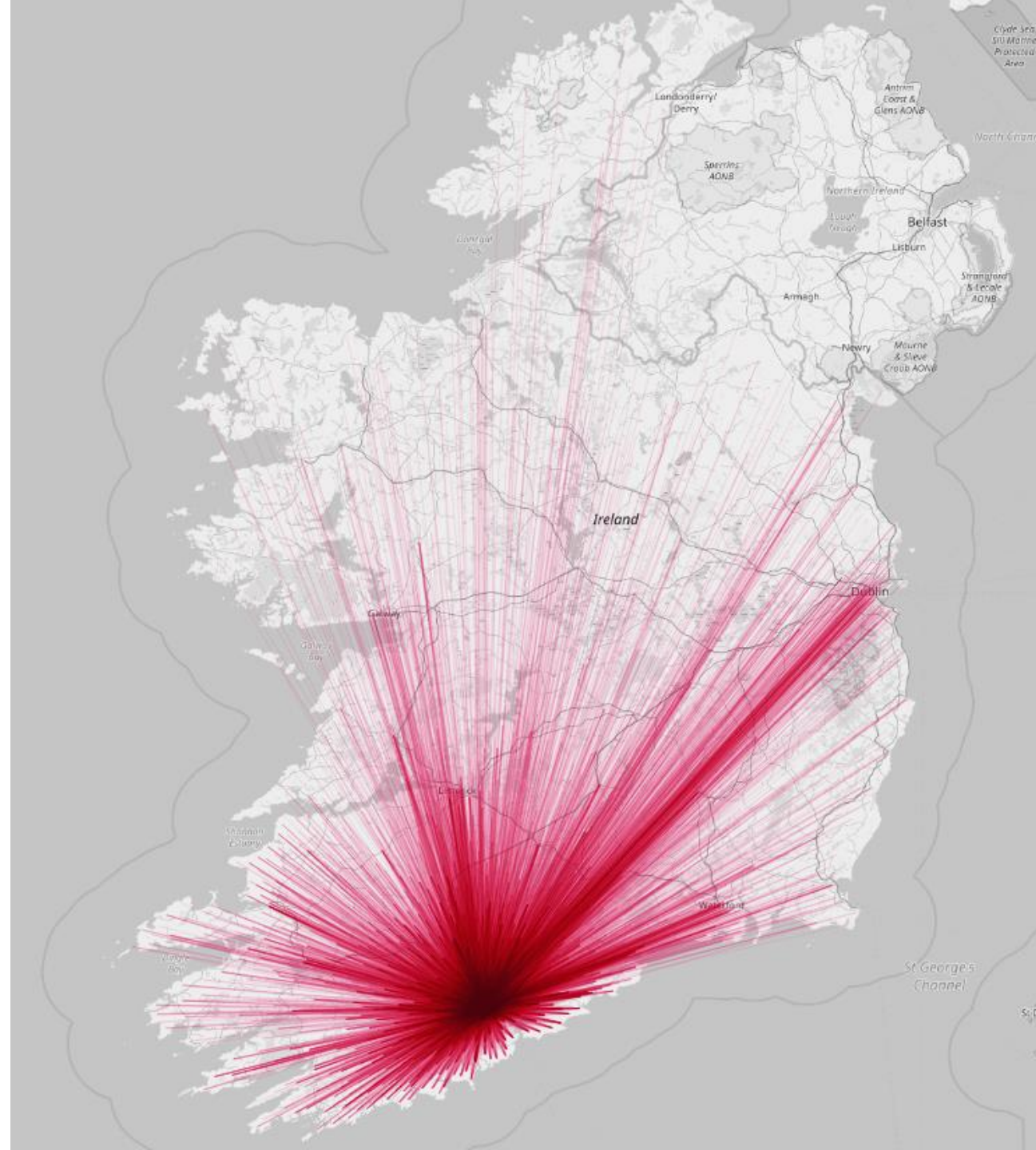
50% Opacity

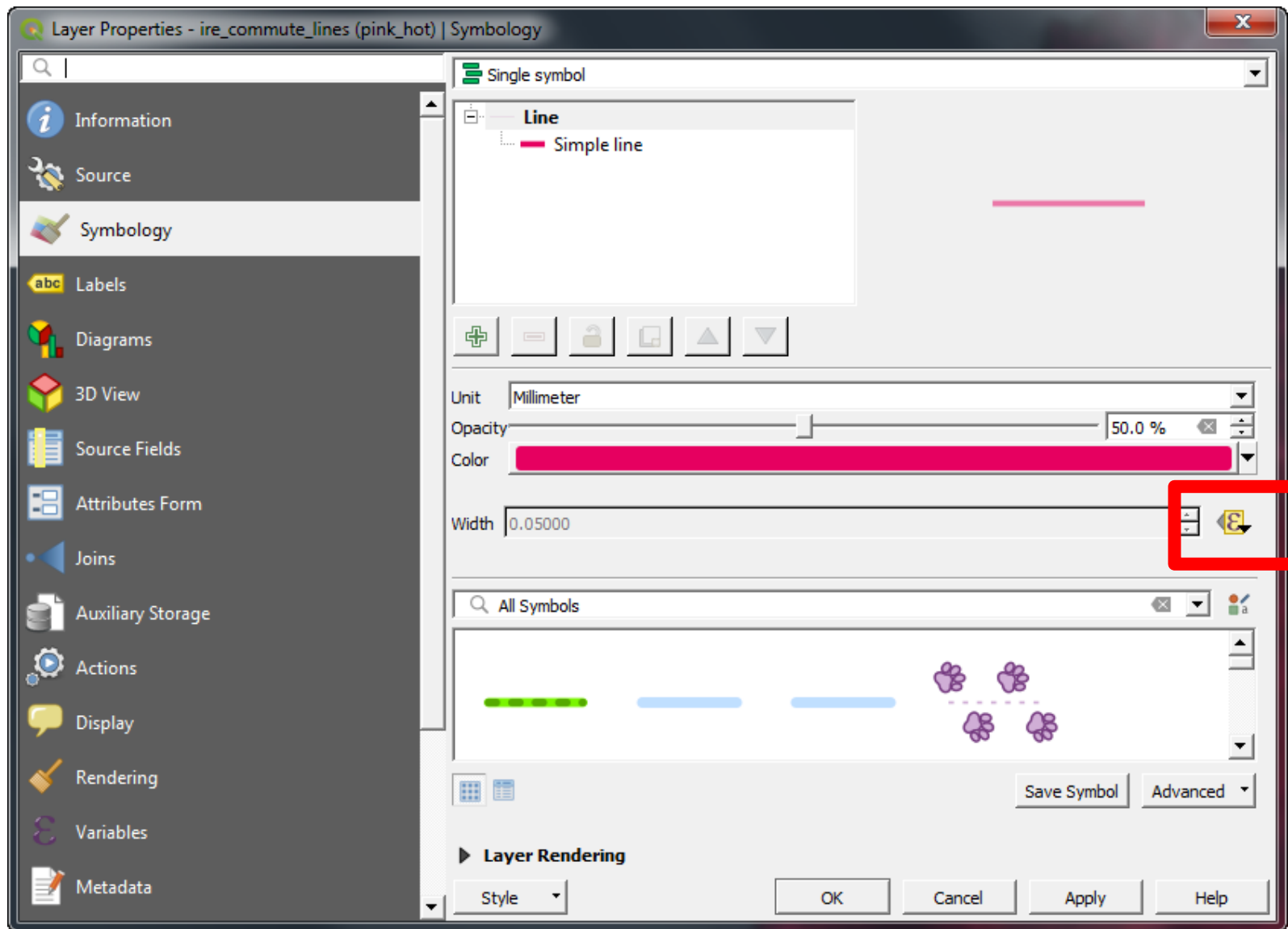


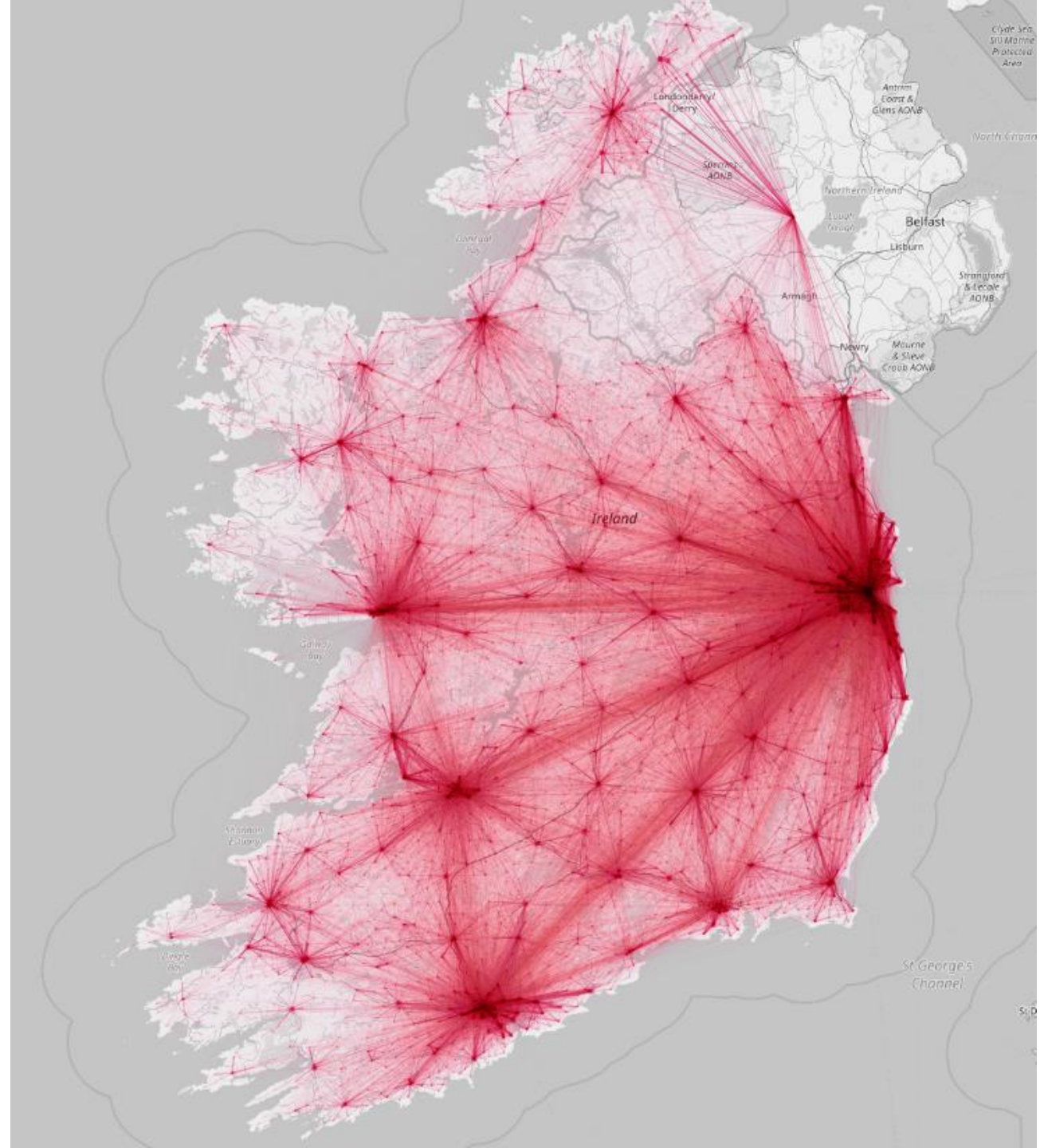


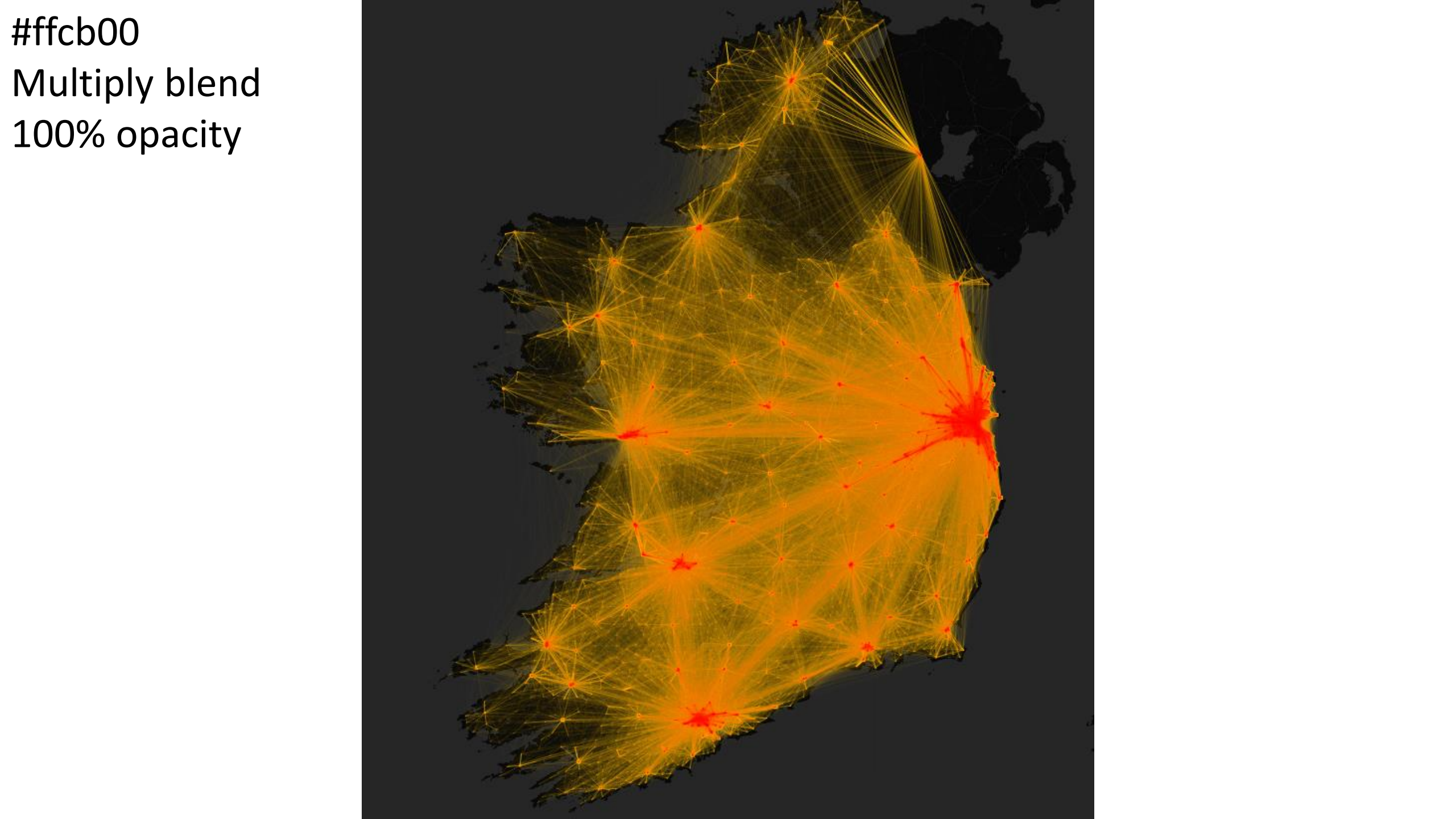


Greyscale







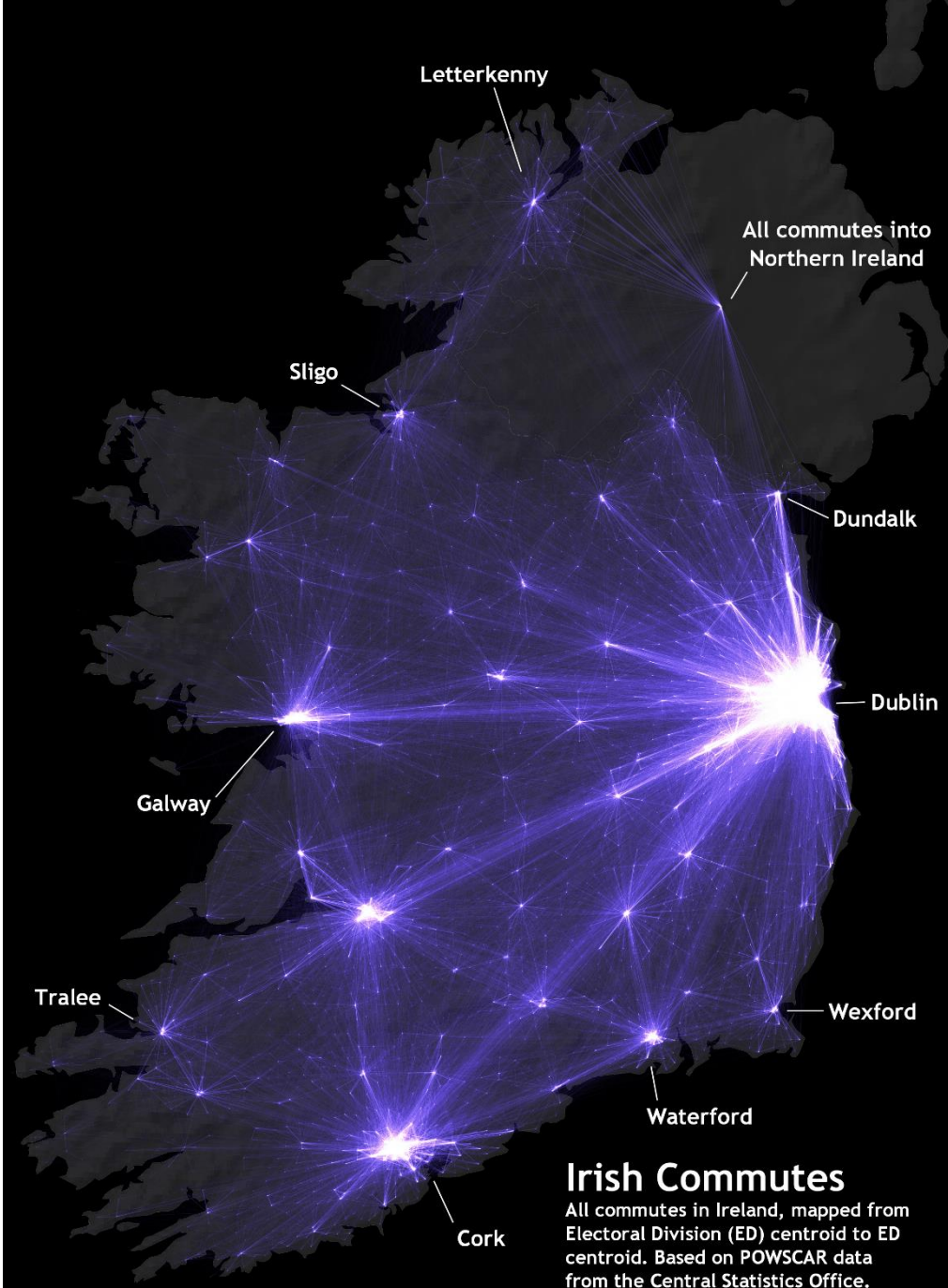


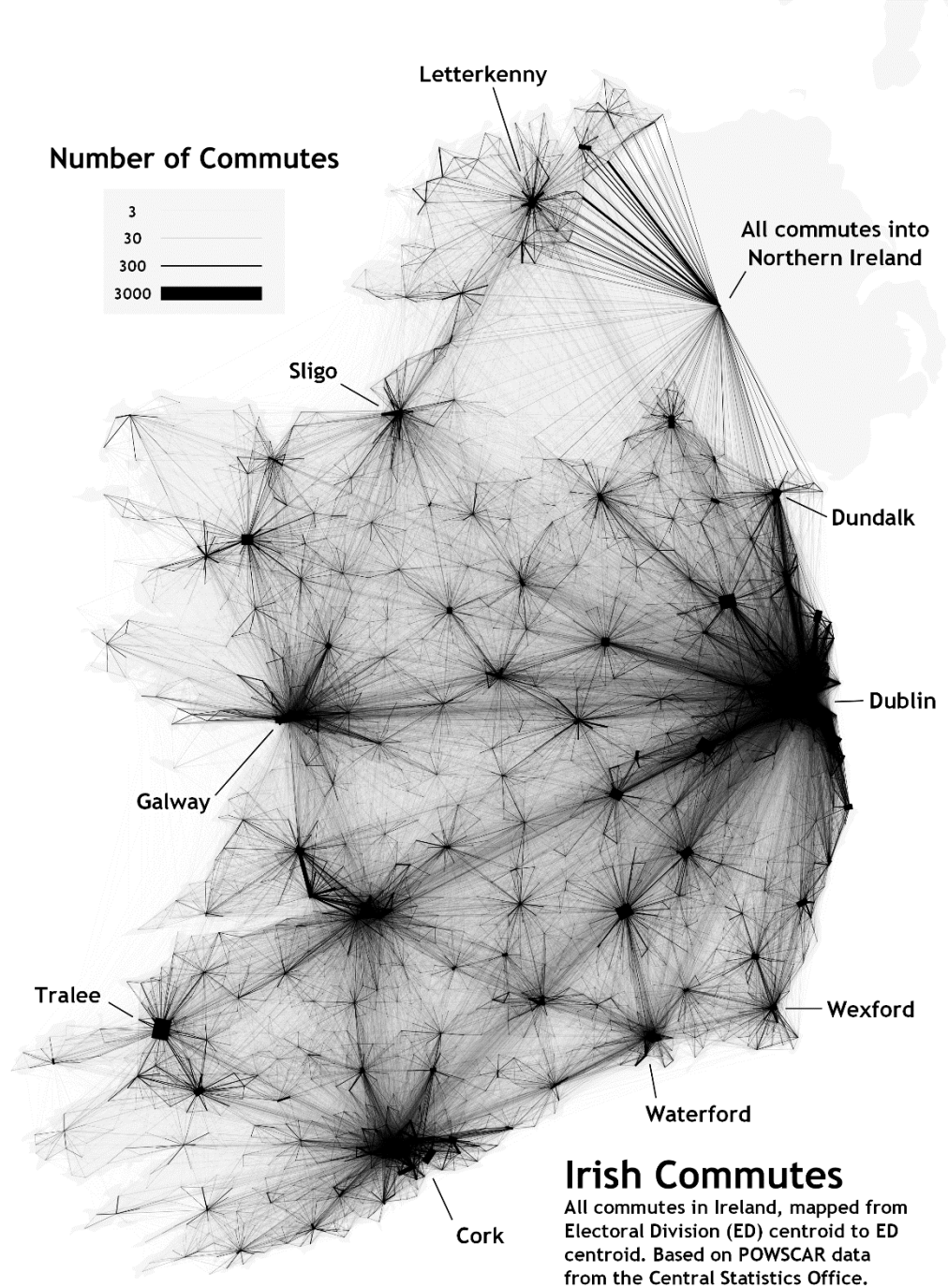
#6450d7

Addition blend

100% *opacity*







Irish Commutes

All commutes in Ireland, mapped from Electoral Division (ED) centroid to ED centroid. Based on POWSCAR data from the Central Statistics Office.

Web Maps

Every Person in Great Britain Mapped

2010 Census Population Data
2018 Building Outlines



GISforThought.com

Contains OS data © Crown copyright and database right 2018
Contains Royal Mail data © Royal Mail copyright and database right 2018
Contains National Statistics data © Crown copyright and database right 2018

Every Person in Scotland Mapped

☐ Mapbox Basemap

Map submitted for The British Cartographic Society - OS OpenData Award 2016



+

-

Every Person in Scotland Mapped

☐ Mapbox Basemap

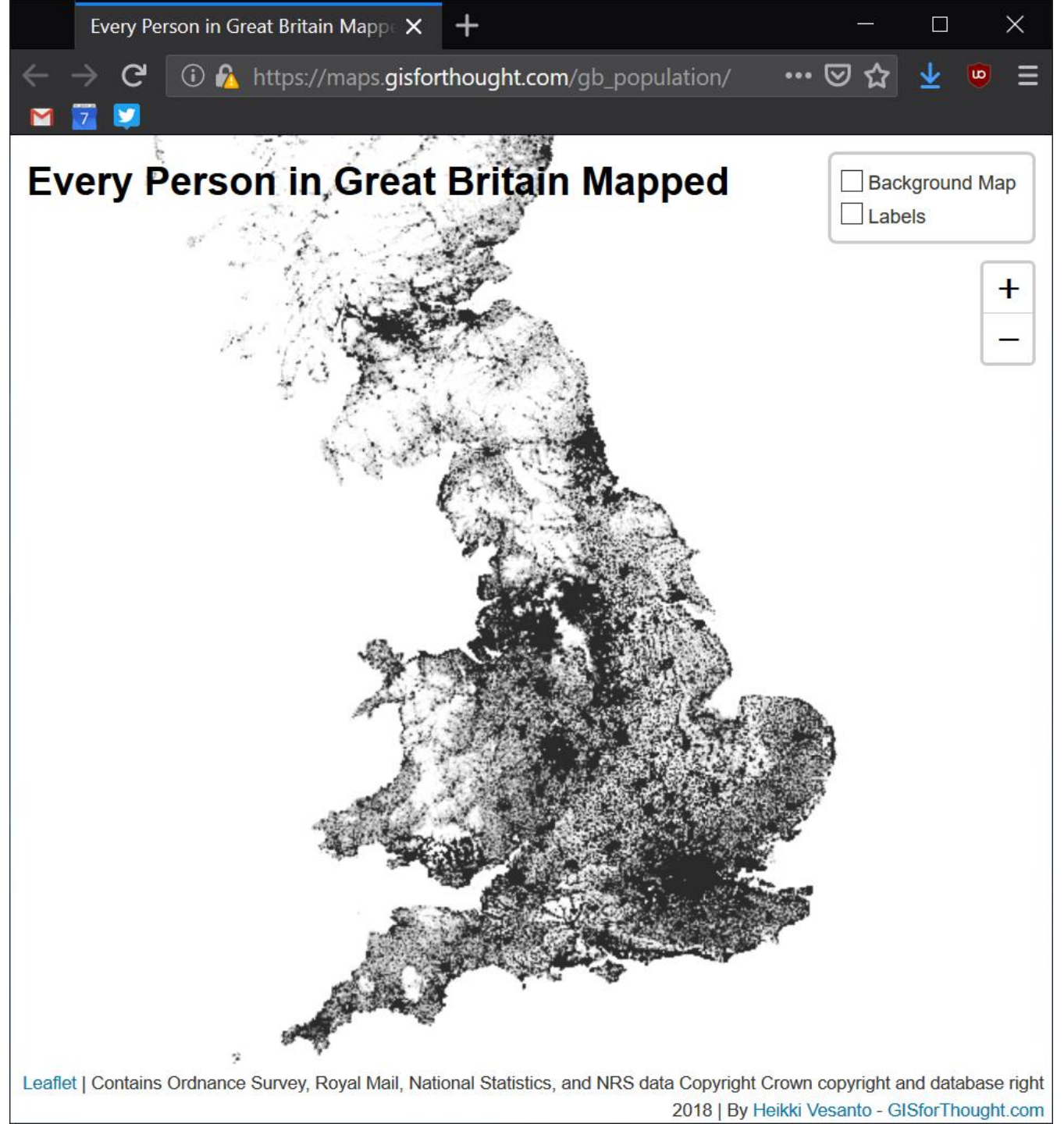
Map submitted for The British Cartographic Society - OS OpenData Award 2016



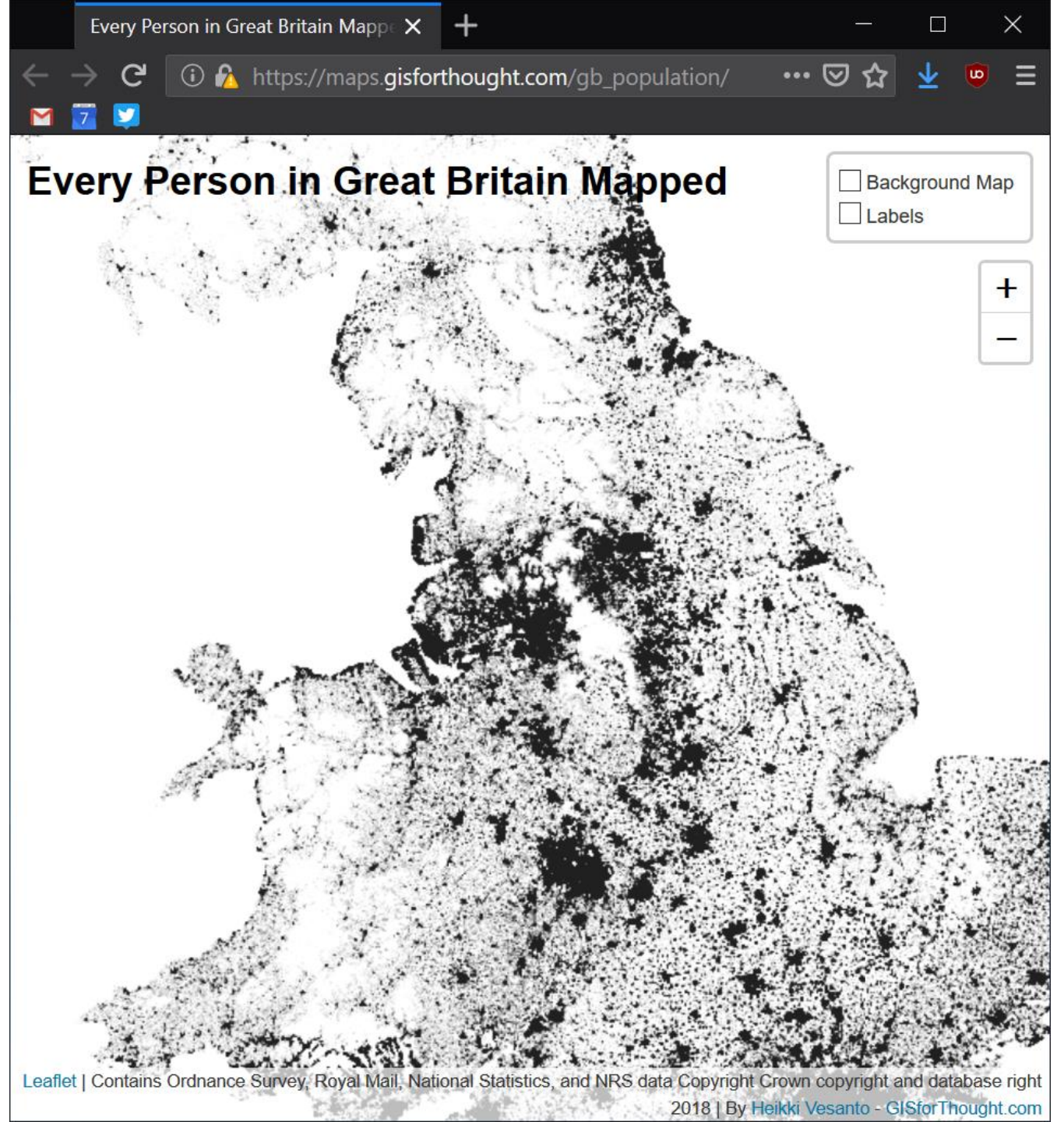
maps.gisforthought.com/gb_population/



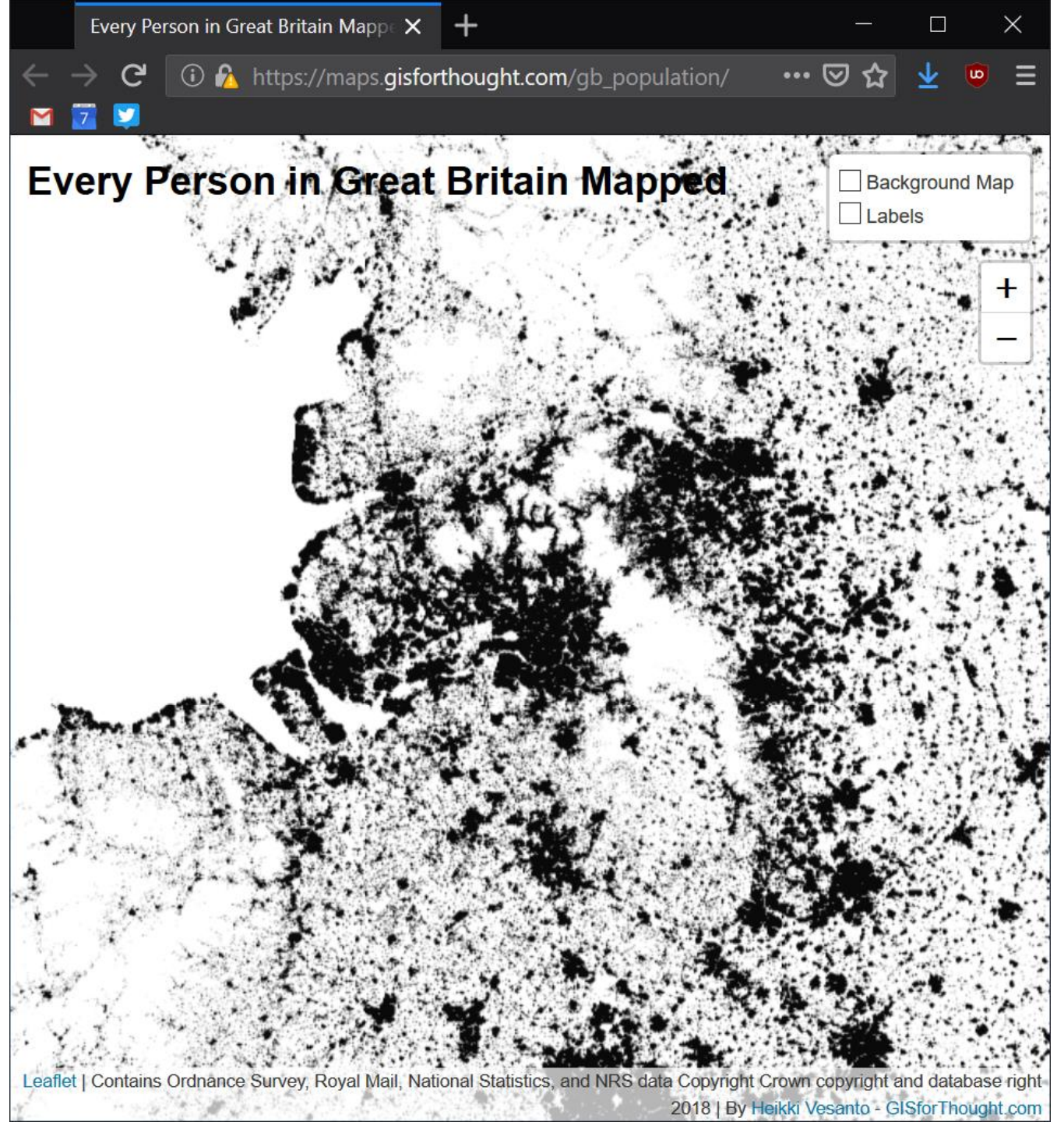
maps.gisforthought.com/gb_population/



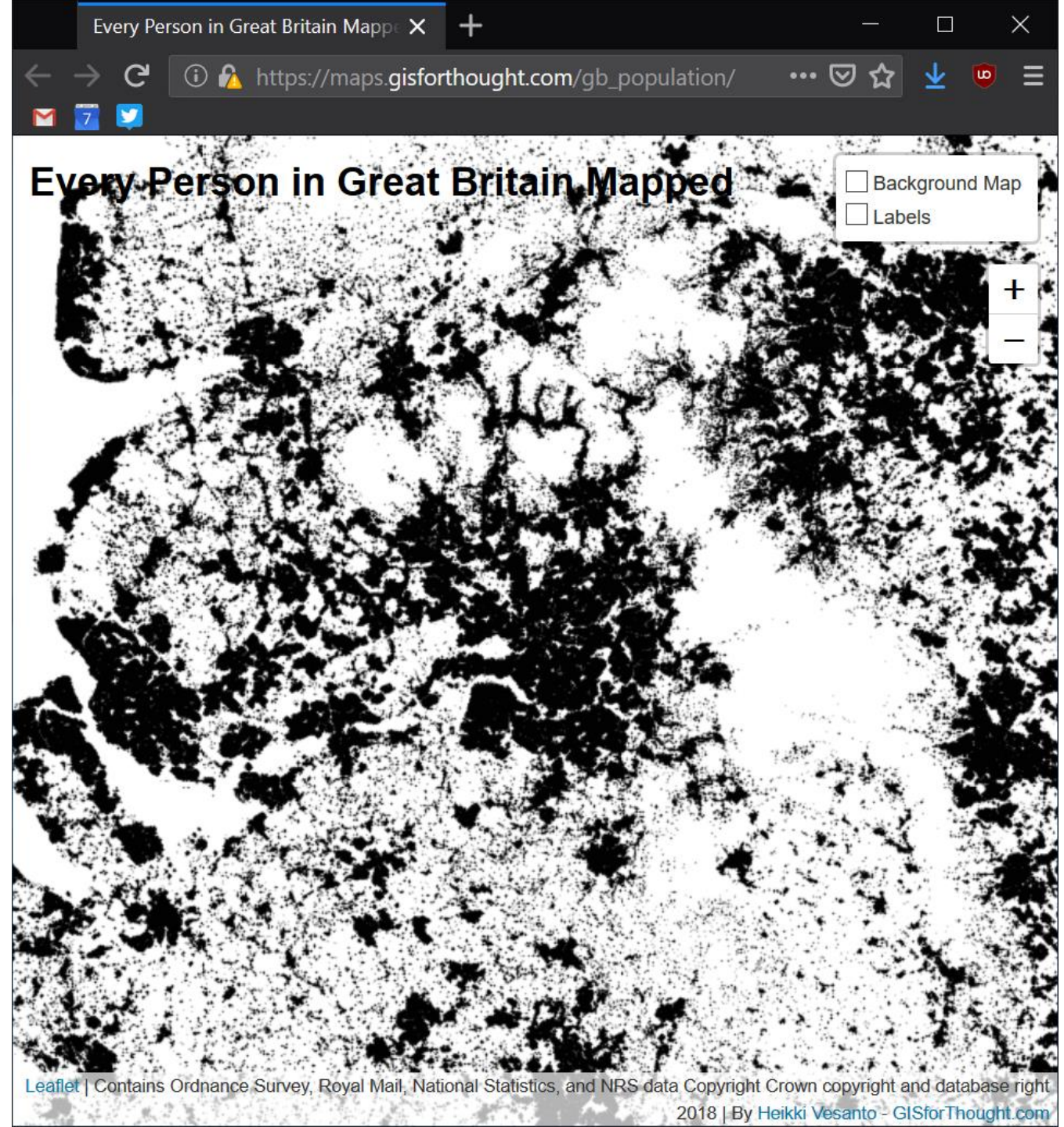
maps.gisforthought.com/gb_population/



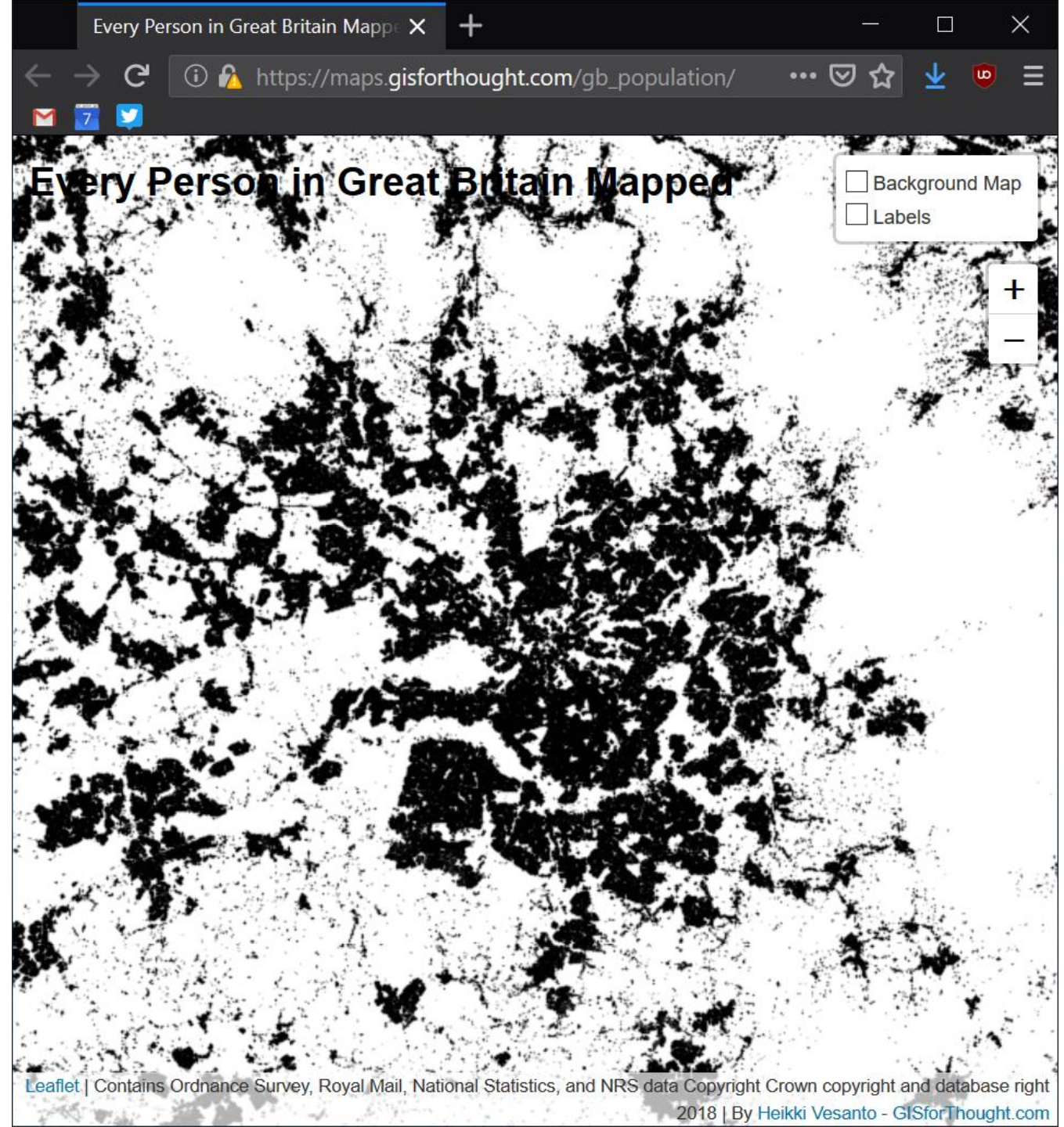
maps.gisforthought.com/gb_population/



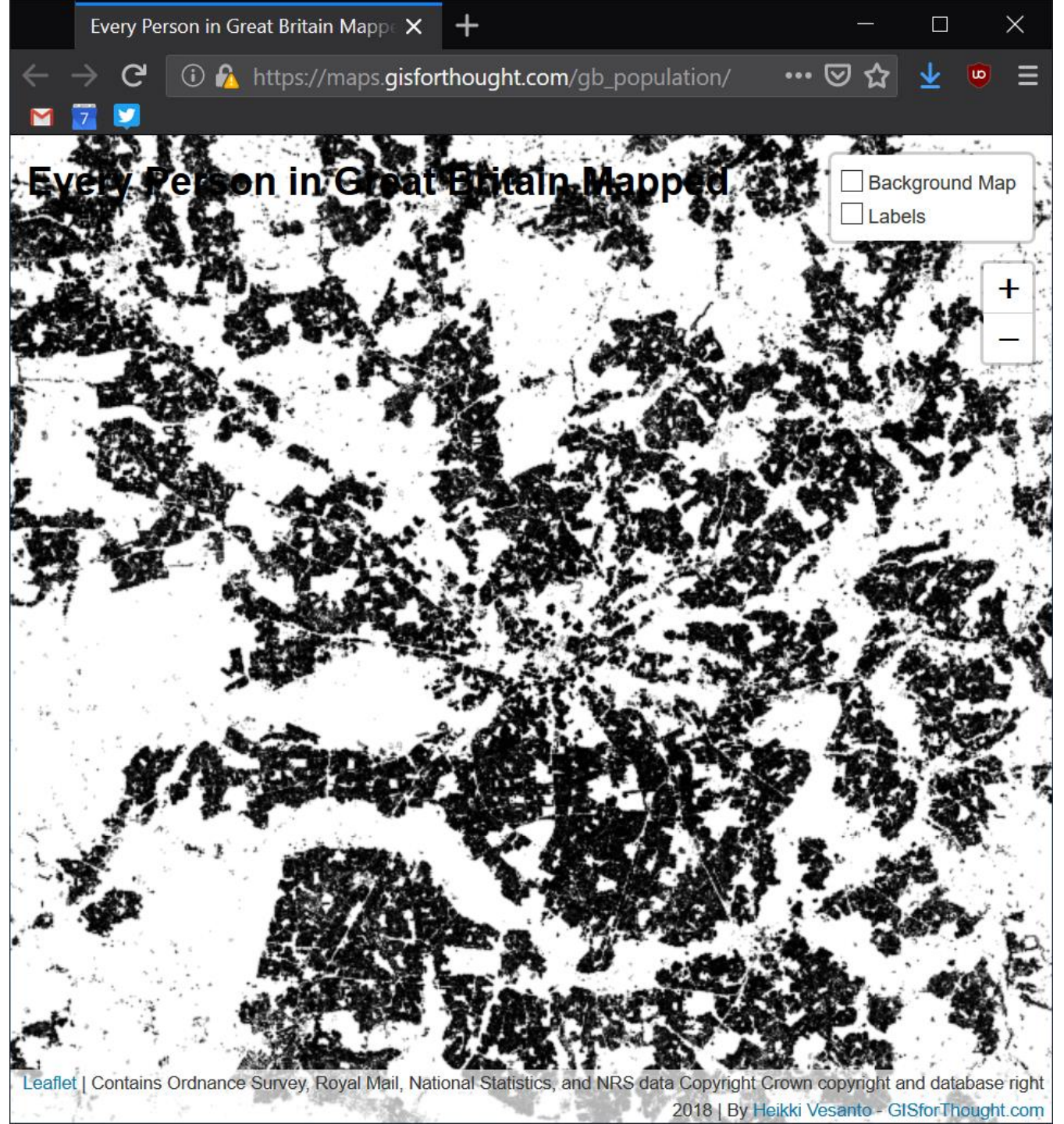
maps.gisforthought.com/gb_population/



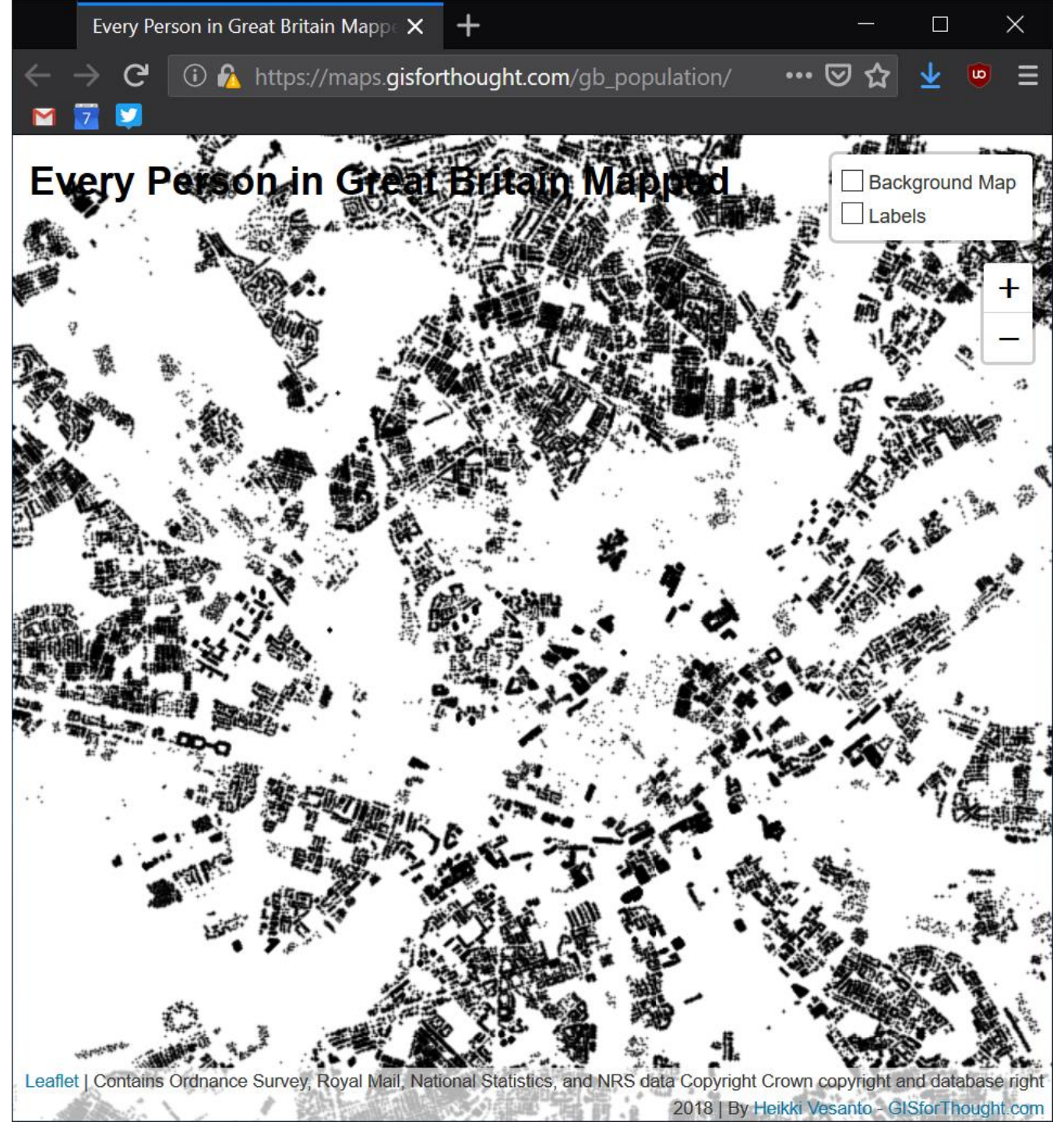
maps.gisforthought.com/gb_population/



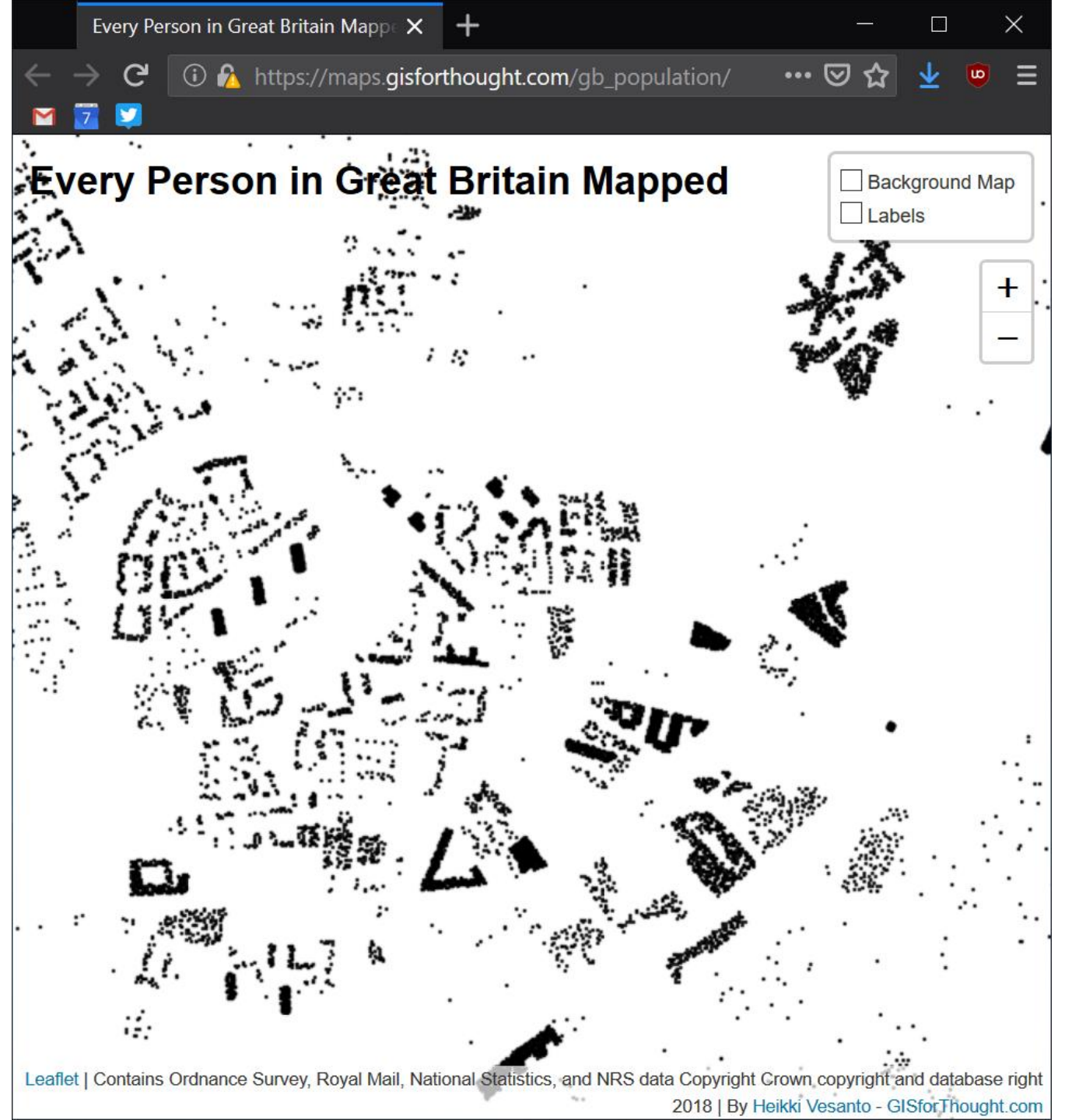
maps.gisforthought.com/gb_population/



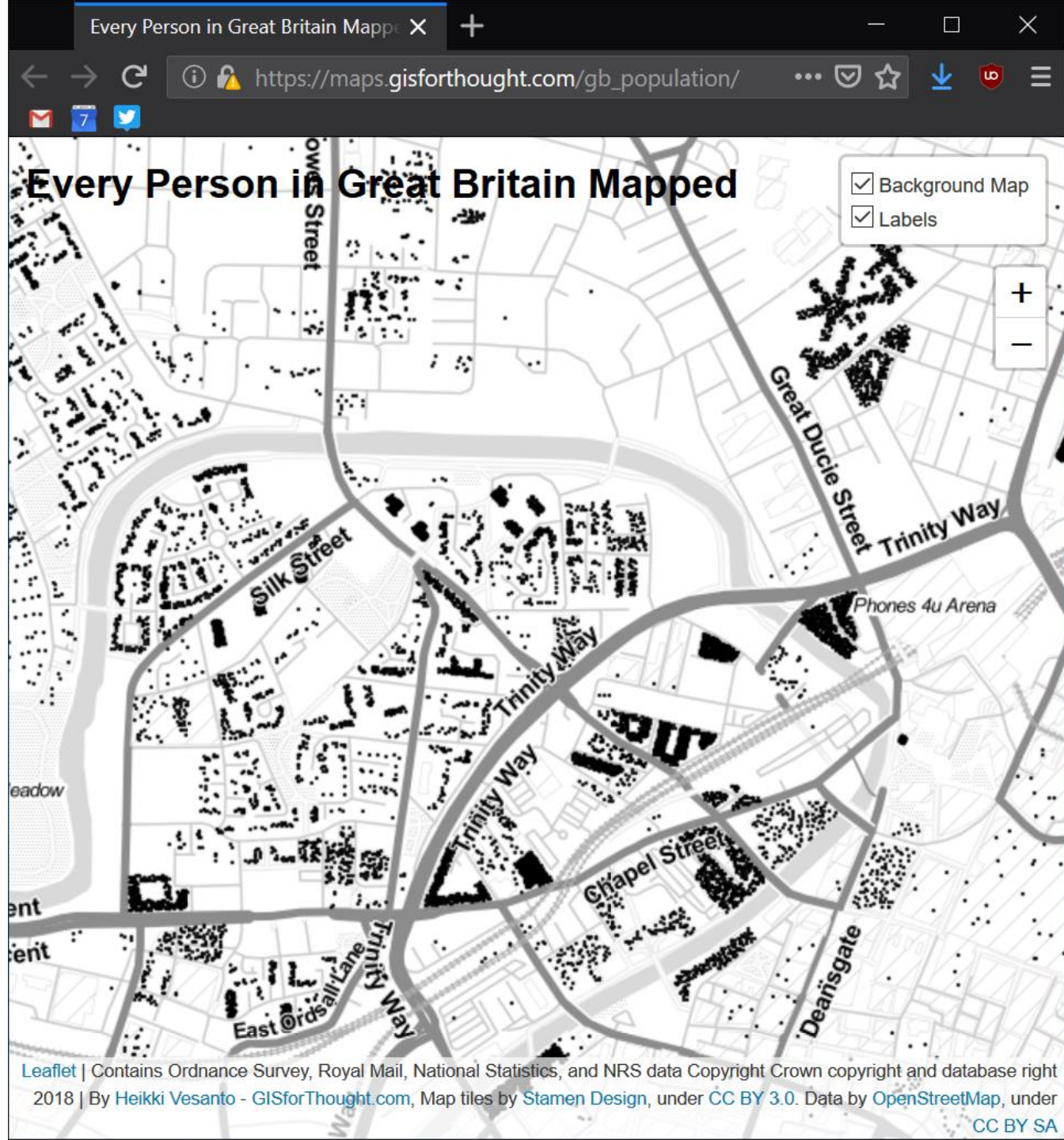
maps.gisforthought.com/gb_population/

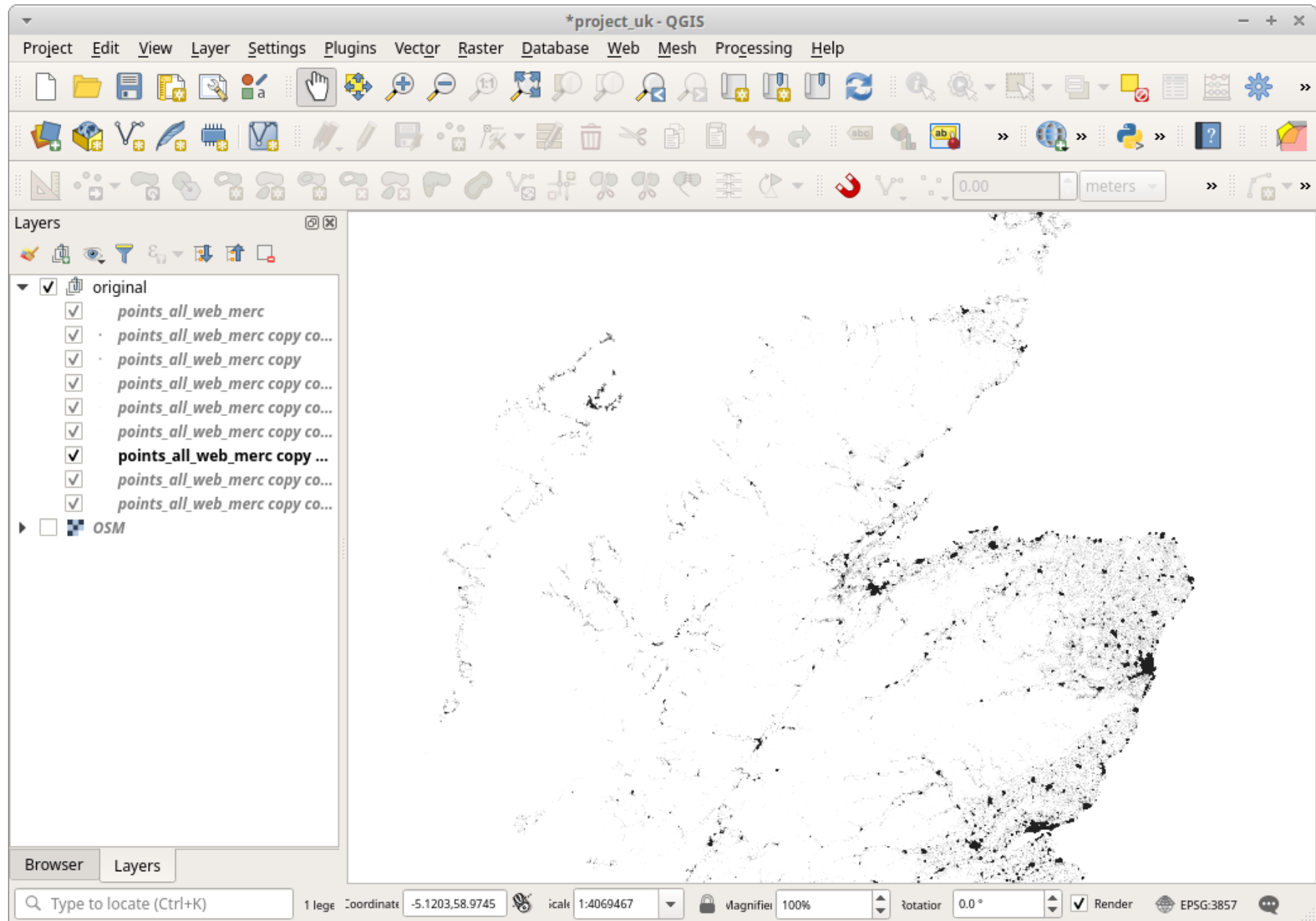


maps.gisforthought.com/gb_population/



maps.gisforthought.com/gb_population/







Incredible map shows exactly where 62m people live in Great Britain.. from the Queen in Buckingham Palace, to the most northerly resident of Shetland

- The map, which is based on most recent census data, uses a black dot for every individual in Great Britain
- Zoomed out it shows heavy areas of population in major cities such as London, Glasgow and Manchester
- But toggle in and you are able to observe street patterns and even the residents of individual houses

By [RORY TINGLE FOR MAILONLINE](#)

PUBLISHED: 12:28, 11 March 2019 | **UPDATED:** 02:00, 12 March 2019

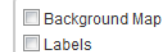


The creator of a remarkable new map claims to show the position of every one of Great Britain's 62 million population... from the Queen in **London** to the most northerly resident of Shetland.

The map, which is based on the most recent census data, uses a black dot for every individual - and when zoomed out shows areas of heavy population in major cities such as London, **Glasgow** and Manchester.

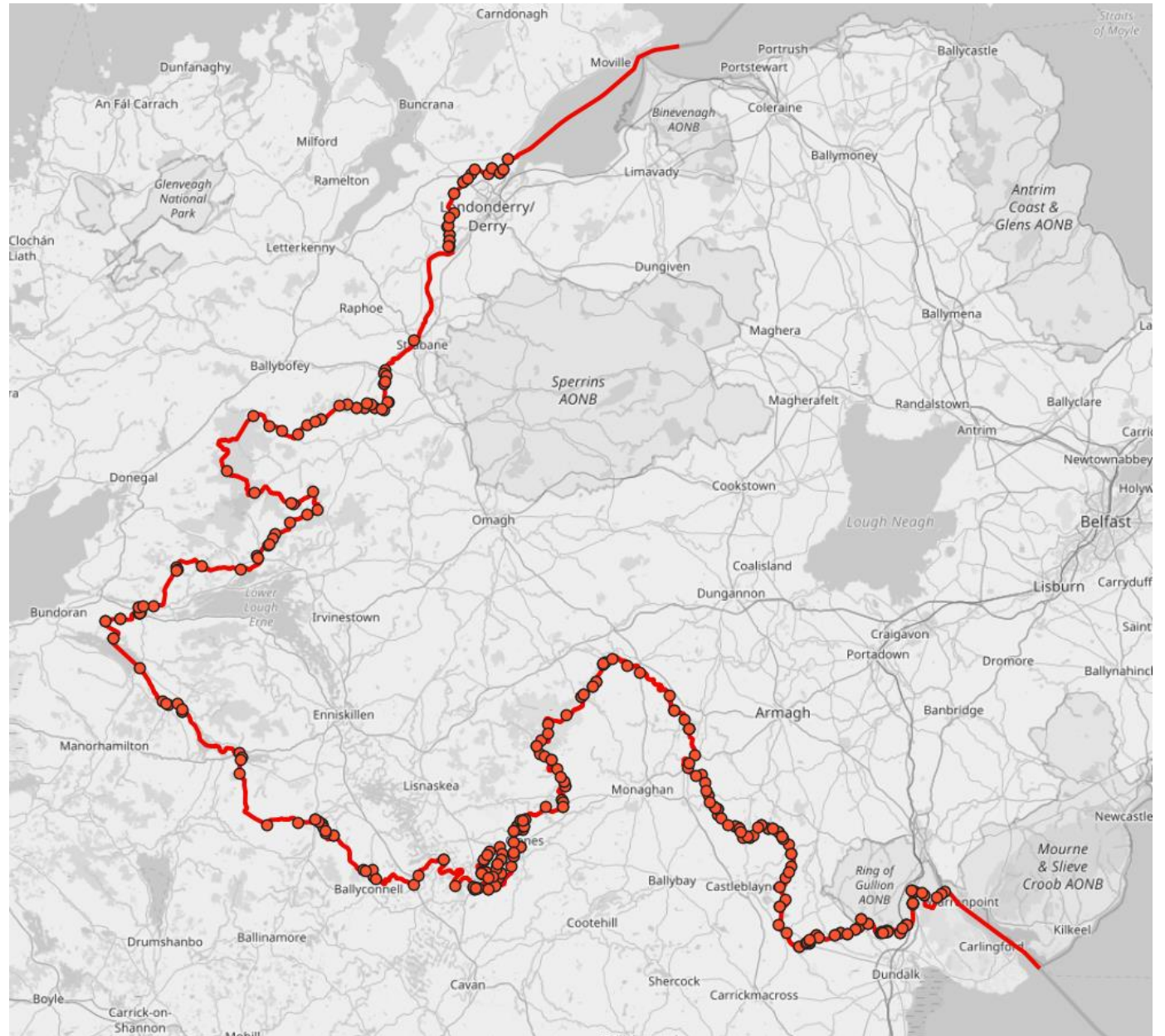
But zoom right in and it's possible to spot the residents of Buckingham Palace. In nearby Downing Street, a pair of dots could include the Prime Minister.

Every Person in Great Britain Mapped



Border

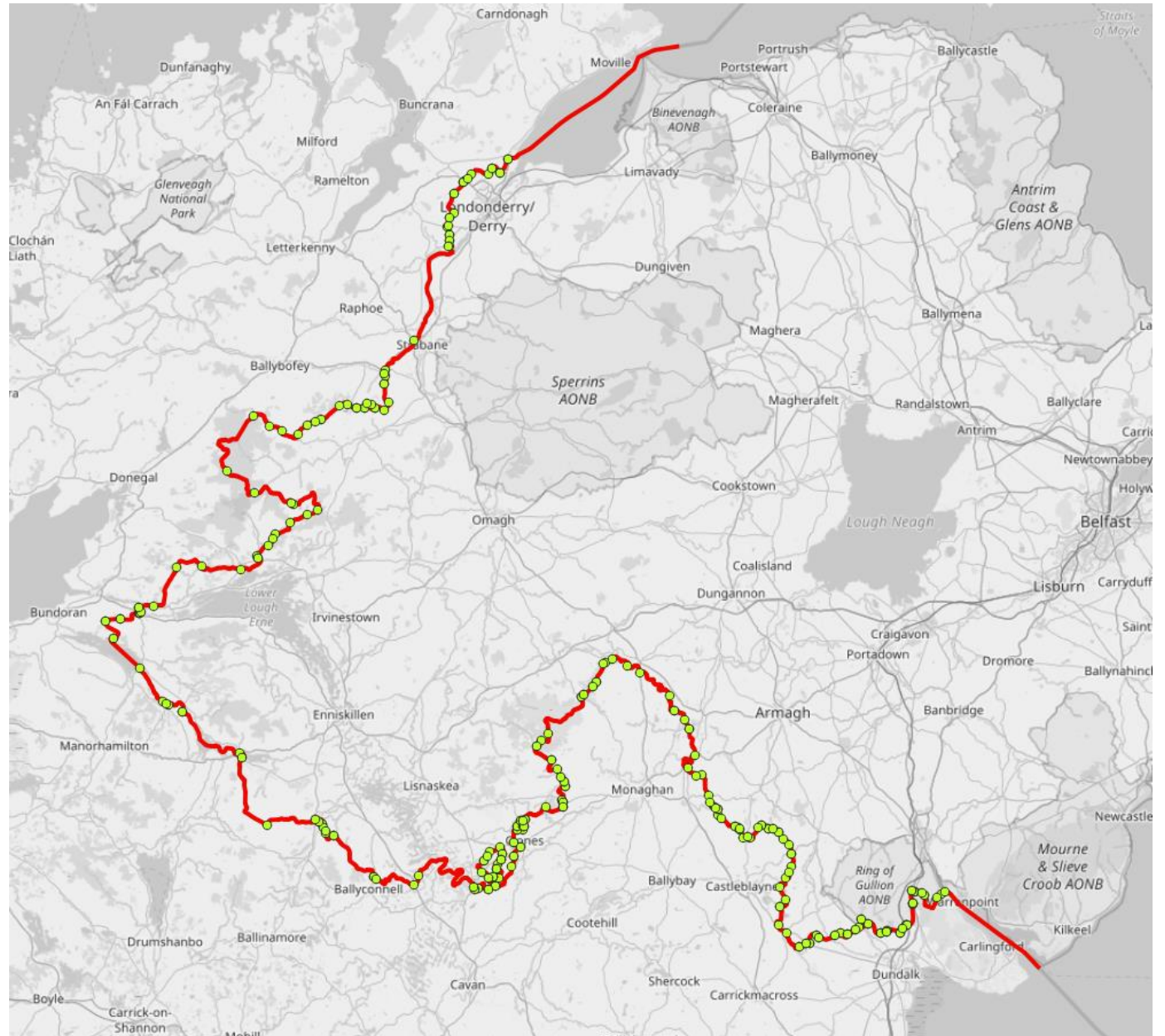
358 Crossing points



Border

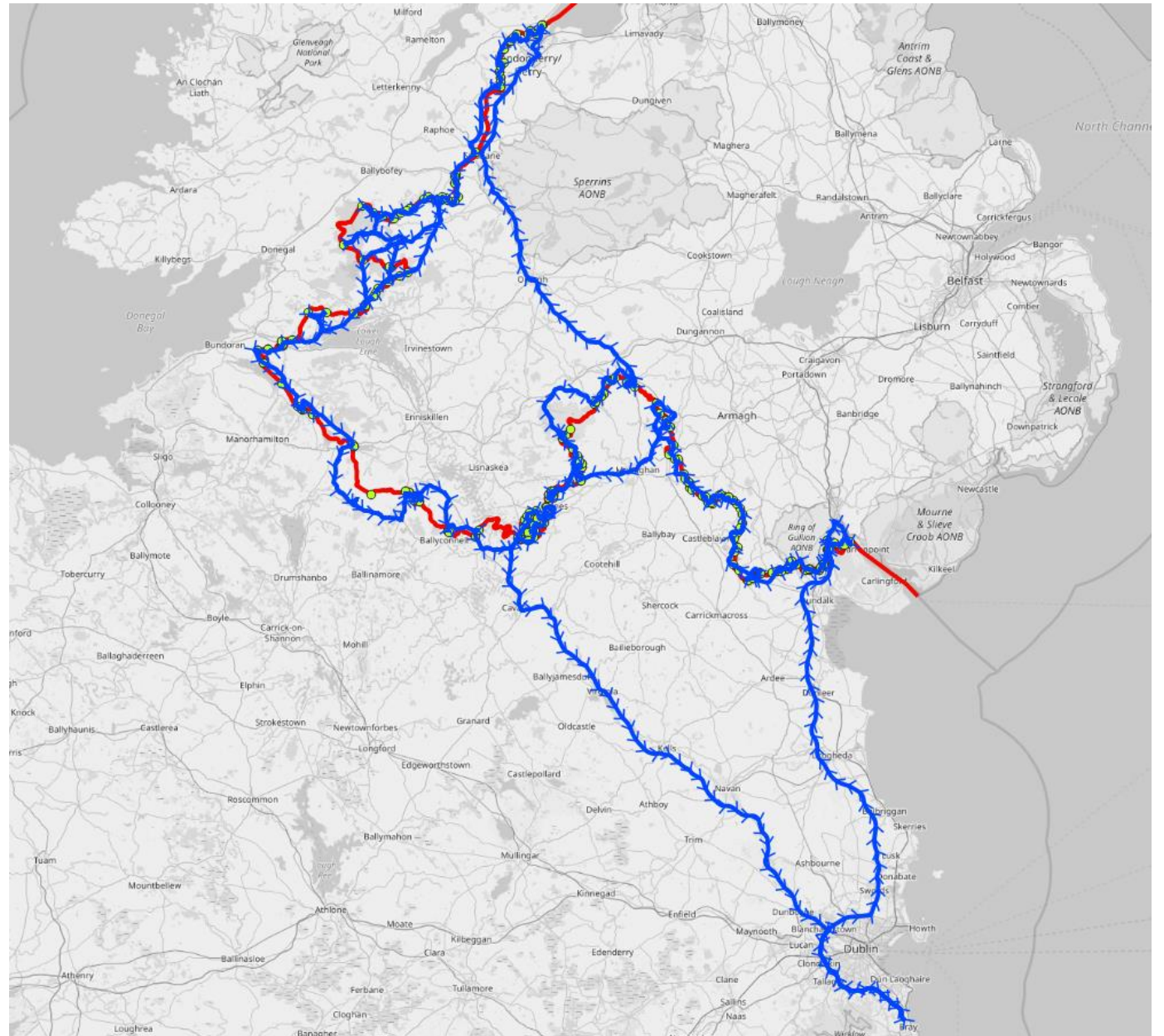
Then with filtering some of the highways, so removing:
and b.highway != 'track'
and b.highway != 'service'
and b.highway != 'services'
and b.highway != 'proposed'
and b.highway != 'planned'
and b.highway != 'pedestrian'
and b.highway != 'track'
and b.highway != 'gallop'
and b.highway != 'footway'
and b.highway != 'disused'
and b.highway != 'bridleway'
and b.highway != 'abandoned'

292 Crossing points



Border

292 Crossing points
Travelling sales person
routing to each one.
1101km trip.





All

qgis2



Installed



Not installed



Install from ZIP



Settings



QGIS2Mapea4



Qgis2threejs



qgis2web



Ruimtelijke Plannen

qgis2web



Export to an OpenLayers/Leaflet webmap

qgis2web generates a web map from your current QGIS project, either as OpenLayers or Leaflet. It replicates as many aspects of the project as it can, including layers, styles (including categorized and graduated), and extent. No server-side software required.

★★★★☆ 317 rating vote(s), 417328 downloads

Tags [webmaps](#), [leaflet](#), [export](#), [web](#), [html](#), [webmap](#), [css](#), [openlayers](#), [ol3](#), [javascript](#)

More info [homepage](#) [bug tracker](#) [code repository](#)

Author Tom Chadwin, Riccardo Klinger, Victor Olaya, Nyall Dawson

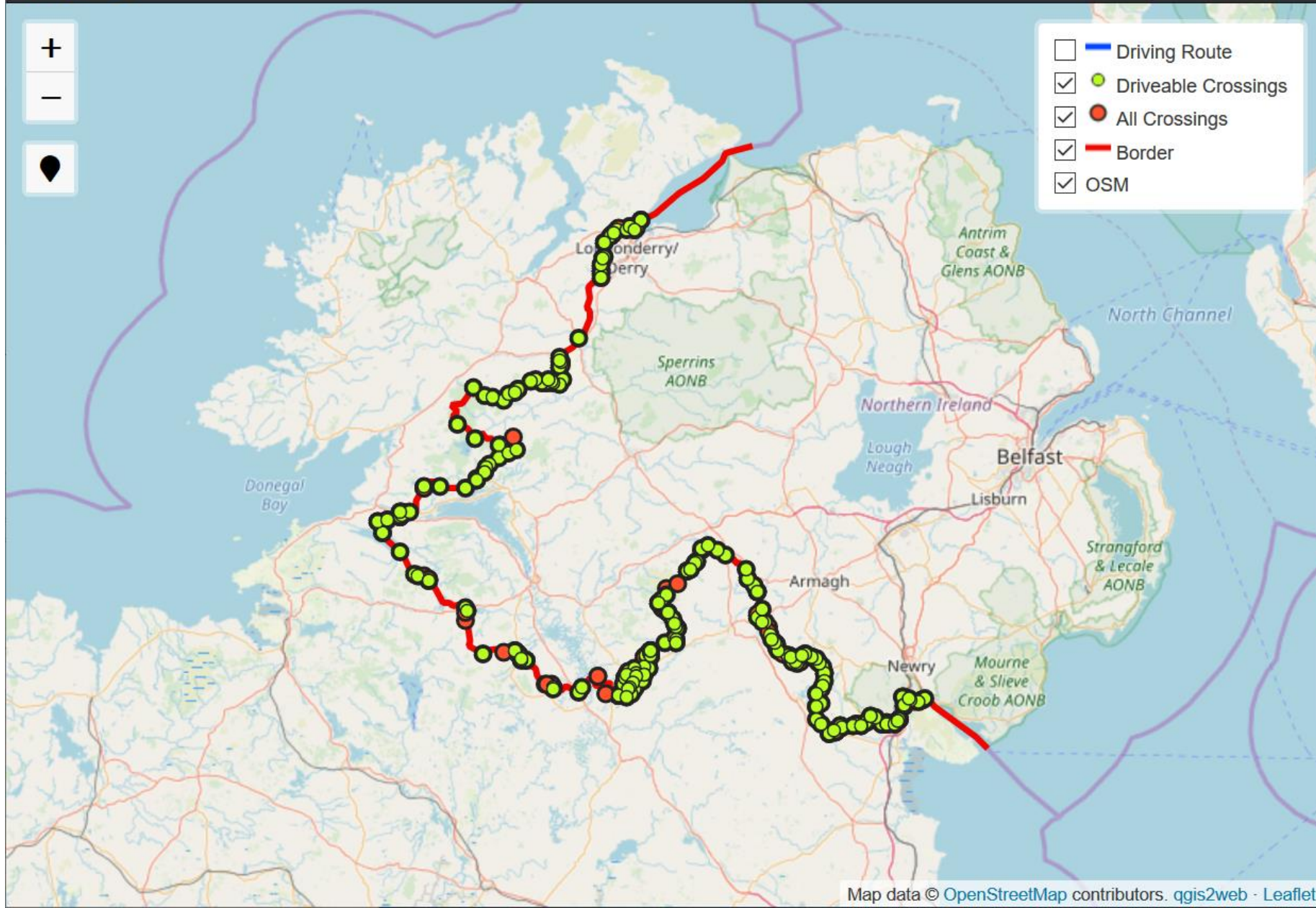
Available version [3.6.0](#)

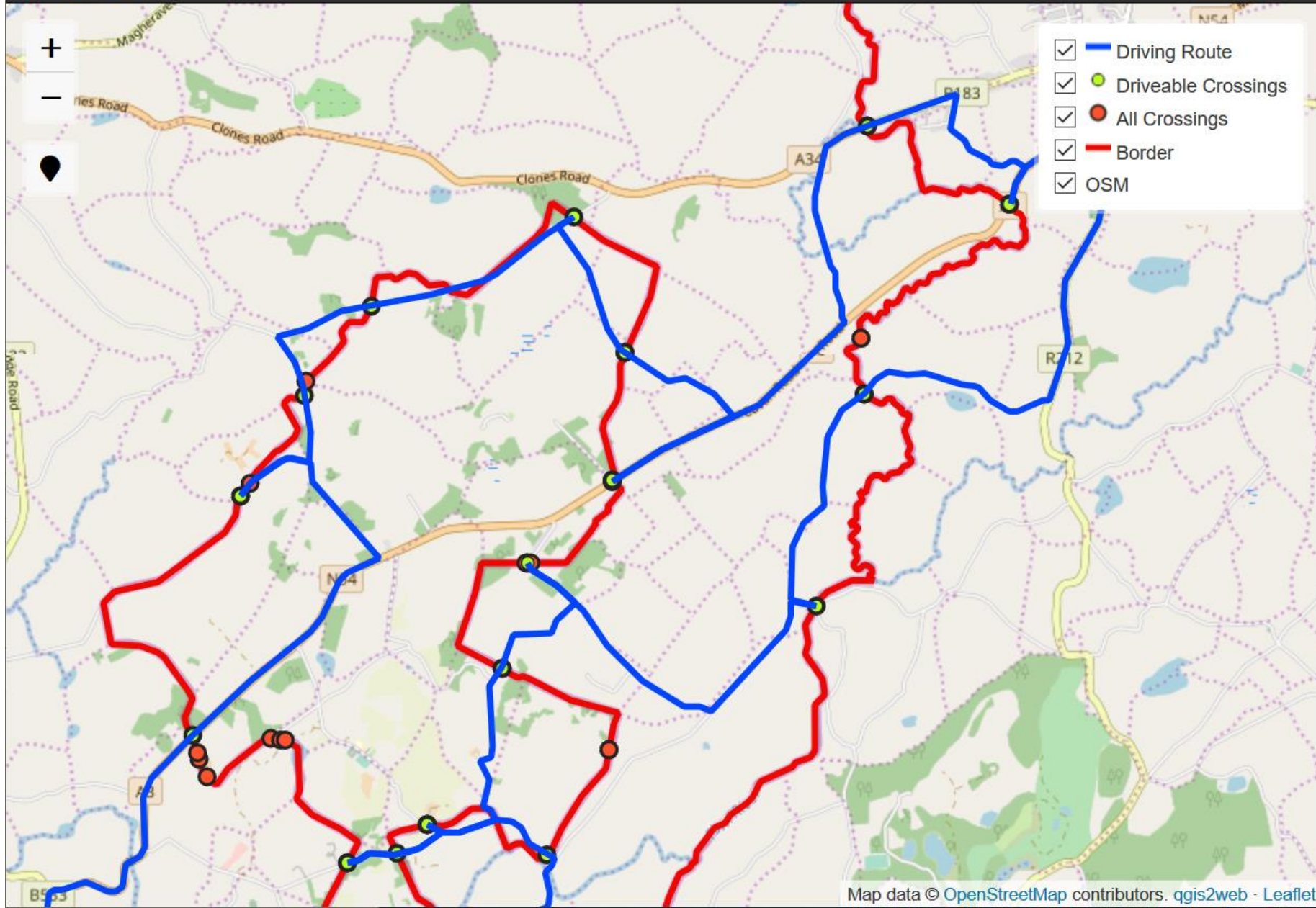
Upgrade All

Install Plugin

Close

Help





Links

- @charley_glynn
 - <https://www.ordnancesurvey.co.uk/blog/2017/02/carto-tips-using-blend-modes-opacity-levels/>
- Tiles:
 - http://alephnull.net/software/gis/tile_writer.shtml
- QGIS2Web:
 - <https://github.com/tomchadwin/qgis2web/wiki>

Thanks